

# **CRPD Based Budget Analysis**

**A Study in Odisha**

**Conducted By**  
**SWABHIMAN**

**Supported By**  
**NCPEDP and IDA**

## **Abbreviations and Acronyms**

ADSWO- Additional District Social Welfare Officer  
BBSA- Bhima Bhoi Bhinnakshyama Samarthya Abhiyan  
BRC-Block Resource Teacher  
BRGF-Backward Region Grant Fund  
BRT-Block Resource Teacher  
CRPD- Convention on the Rights of Persons with Disabilities  
CSP-Central Sponsored Scheme  
CWSN-Children with Special Needs  
DDRC-District Disability Rehabilitation Centre  
DIS-District Information System  
DRDA-District Rural Development Agency  
DRI- Differential Rate of Interest  
DSWO-District Social Welfare Officer  
FGD-Focused Group Discussion  
GP- Grama Panchayat  
HIV-Human Immune Deficiency Virus  
IAY-Indira AwasYojna  
ICDS- Integrated Child Development Services  
IDD-National Iodine Deficiency Disorder Control Programme  
IDS-Integrated Disease Surveillance  
IEV-Inclusive Education volunteer  
LSEOs-Lady Social Educational Organizers  
MBPY-Madhu Babu Pension Yojana  
MGBBY-Mahatma Gandhi Bunkar Bima Yojana  
MGNREGS-Mahatma Gandhi National Rural Employment Guarantee Scheme  
MVSN- MahilaVikas Samabaya Nigam  
NDCP-National Disease Control Programmes  
NGO-Non Government Organization  
NHFDC-National Handicapped Finance and Development Corporation  
NLEP-National Leprosy Eradication Programme

NPCB-National Programme for Control of Blindness

NRLM-National Rural Livelihood Mission

ODP-Odisha Disability Pension

OPEPA-Odisha Primary Education Program Authority

OSCCW- Odisha State Council for Child Welfare

OSDN-Odisha State Disability Network

PAB-Project Approval Board

PWDs-Persons with Disabilities

RCI-Rehabilitation Council of India

SCW- State Commission for Women

SEO- Social Educational Organizers

SFC- State Finance Commission

SGSY-Swarnajayanti Gram SwarozgarYojna

SSA-Sarva Sikshya Abhiyan

SSWB- State Social Welfare Board

TLM-Teaching Learning Material

TRs-Rupees in Thousand

UEE- Universalization of Elementary Education

UNCRPD- United Nations Convention on the Rights of Persons with Disabilities

W&CD-Women and Child Development Department

WHO-World Health Organization

## **Executive Summary**

This disability rights budget analysis is an attempt to assess how Odisha state government uses public finance in realizing, promoting and protecting the rights of persons with disabilities. Through this analysis we tried to get information on the amount of money the state government spent for the welfare of PWDs, the constraints in the utilization of the fund, the bottlenecks in the implementation of the various programs/schemes and the efficacy of the schemes in empowering PWDs. In the process of data collection we gathered information from both the functionaries and beneficiaries.

This report has eight chapters all together. The first chapter gives a brief introduction of disability and the population of disability in the state. The second chapter contains the background note, as to the rationale behind the present study. The third chapter contains the scope and methodology of the study.

The fourth chapter is about State level data and its analysis. In this chapter, we have presented all data received from the office of Welfare of Persons with disabilities, Odisha Primary Education Programme Authority and allied government departments. Information was mostly obtained from websites and annual reports.

The fifth chapter focuses on discussions held with different officials of the district administration, which includes District Social Welfare Officer, Additional District Social Welfare Officer, District Project Coordinator- SSA, Project Director – District Rural Development Authority and District Disability Rehabilitation Centre officials. At district level these officials are responsible for implementing the various schemes and programmes.

The sixth chapter has the key findings of focus group discussion with persons with disabilities and parent groups, which were conducted in the sample districts with the support of NGO partners of Odisha State Disability Network. These discussions revealed that persons with disabilities do not get adequate information on most of the welfare schemes and programmes. There is no such mechanism available in the system which can act as a source of information dissemination.

The seventh chapter contains district level data and statistics. This data includes budgetary allocation and expenditure on inclusive education programme, details of BBSA camp and different welfare schemes implemented in the districts by DSWO and DRDA.

The last and eighth chapter is the conclusion along with recommendations suggested.

## **Chapter: 1**

### **INTRODUCTION**

Disability is on the rise globally due to an ageing population and increasing chronic health conditions. Estimated to number more than one billion or 15 per cent of the world's total population, as per the World Report on Disability, released by the World Health Organisation on June 9, 2011, PWDs are subject to extensive and diverse forms of marginalization. PWDs are more vulnerable and poorer than people without disabilities. About 80% of PWDs live in developing countries. Of the four disability related legislations in India, it is the Persons with Disabilities (PWD) Act, 1995 that recognizes the multi-faceted nature of disability and provides for education, employment, creation of a barrier-free environment and social security for them. Although the Act is guided by the philosophy of empowerment by addressing social attitudes, it is still premised on medical definitions of physical and cognitive impairments. The Act has not been enacted with a strong anti-discrimination and human rights approach. Thus, while the discussion on India's disability rights movement has advanced towards a rights based model, the policy environment remains largely focused on medical intervention in the form of treatment and rehabilitation to cure the 'disease' or the 'problem'. Women, men and children with disabilities in India continue to experience poverty, indignity and inequities.

It is, therefore, heartening that India ratified the United Nations Convention on the Rights of Persons with Disabilities (UNCRPD) on October 1, 2007. However, although India was one of the first countries to ratify the CRPD, very little has been done to protect and promote the rights of persons with disabilities, in accordance with the CRPD provisions. There have been limited attempts to assess efforts towards realizing the CRPD, except identification of the required changes in Indian laws to fulfill its mandate. However, changes in Indian laws cannot suffice to realize the CRPD in spirit. Harmonizing the laws can only assure that the Indian State meets its legal commitments on paper. As the experience of previous disability legislation shows, it is the actual implementation of the laws that holds the key to empowerment of PWDs.

## Profile of Odisha

As per the 2011 Census data, the total population of PWDs stands at 12, 44,402, registering a growth of 21.84 per cent over the decade 2001. Of the total disabled persons in the State, at least 6, 74,775 are males and 5, 69,627 females.

### Population of persons with disabilities in Odisha

Type of disability	Persons	Males	Females
In Seeing	2,63,799	1,36,851	1,26,948
In Hearing	2,37,858	1,23,245	1,14,613
In Speech	68,517	38,506	30,011
In Movement	2,59,899	152999	1,06,900
Mental Retardation	72,399	40320	32,079
Mental Illness	42,837	22913	19,924
Multiple Disability	1,26,212	65961	60,251
Any Other	1,72,881	93980	78,901
<b>Total</b>	<b>12,44,402</b>	<b>6,74,775</b>	<b>5,69,627</b>

*(Census, 2011)*

Perhaps Odisha is one of the leading states which declared many concessions and facilities for the PWDs in form of rules, regulations and circulars. But it's a matter of regret that 80% of these rules and regulations have remained as publications without implementation. Every day, everywhere the government rules are violated due to which PWDs are losing access to their basic rights. For instance, government has made provision to give concession both in private and government buses to the PWDs travelling by bus, but unfortunately the scheme though declared since long has not been implemented. Government is providing Rs. 300 per month as pension for social security of PWDs. Odisha is the only state, where this minimal amount is given to the PWDs, whereas even in Goa (which is smaller than Odisha) PWDs get Rs.1500 per month.

The entire expenditure towards persons with disabilities is covered under the Minor Head - Welfare of Handicapped, clearly this does not question the existing belief that disability is a welfare based issue. A disability certificate is a document without which a person cannot avail her/his entitlements. There is no central registry as to the details of persons with disabilities for

whom disability certificate has been issued and the purposes for which it has been issued. Only 50% of persons with disabilities have certificates. In Odisha State the disability certificate has to be renewed every three years.

There is a clear cut circular for spending 3% of the total funds of all poverty alleviation schemes for the welfare of PWDs, but nowhere is it implemented in Odisha. Other than the nodal department of disability and one or two others, most departments do not even have a component on disability in their budgets. Further, those who have do not mention the amount spent on disability welfare in their annual reports.

## **Chapter: 2**

### **BACKGROUND**

India has committed for an inclusive development in the XI five year plan. The central vision being “to build on our strengths to trigger a development process which ensures broad-based improvement in the quality of life of the people, especially the poor, SCs/STs, other backward castes (OBCs), minorities and women.” It was also envisaged that “the vision of inclusiveness must go beyond the traditional objective of poverty alleviation to encompass equality of opportunity, as well as economic and social mobility for all sections of society, with affirmative action for SCs, STs, OBCs, minorities and women. There must be equality of opportunity to all with freedom and dignity, and without social or political obstacles. This must be accompanied by an improvement in the opportunities for economic and social advancement. In particular, individuals belonging to disadvantaged groups should be provided special opportunities to develop their skills and participate in the growth process”.

The key commitments made to the disability sector includes acknowledging the obligation of incorporating the Principles of the United Nations Convention on the Rights of Persons with Disabilities (UNCRPD) in the planning, implementation, review and monitoring process, delineate clear-cut responsibilities between concerned Ministries / Departments, concerned Ministries / Departments formulate detailed rules and guidelines within 6 months of approval of the XI Plan, concerned Ministries / Department earmark 3% of their annual outlay for the benefit of persons with disabilities as enjoined in the Persons with Disabilities (Equality of Opportunities, Protection of Rights and Full Participation) Act, 1995.

It has been 7 years since the ratification of the UNCRPD. It is important to analyse the progress made in terms of aligning the programmes and schemes of the department to the UNCRPD and or bringing in new programmes / schemes to implement the provisions of UNCRPD. Inclusion and being a part of the mainstream society is not reflected in the schemes under the department so far.

## **Chapter: 3**

### **SCOPE AND METHODOLOGY**

#### **i) Objectives of the research**

The research is a component of the comprehensive parallel monitoring of the implementation of the CRPD by the government of India and is conducted simultaneously with, and informed by, the legal review assessing compliance of the legal framework with the CRPD and the state level consultations with DPOs.

The overall purpose of the research is to assess how government uses public finances in the realizing, promoting and protecting rights of persons with disabilities?

#### **ii) Scope (*coverage in terms of geography, depth*)**

For the purpose of preparing the baseline report we have analyzed the budgets, policy documents of the various departments of the State Governments and eight sample districts (Puri, Cuttack, Khurda, Koraput, Mayurbhanj, Ganjam, Sundergarh and Kendrapada).

The State level expenditure analysis involves budget analysis and policy gaps analysis. This analysis is restricted to the core issues of education, employment including skill development and poverty alleviation schemes.

## **Chapter: 4**

### **STATE LEVEL DATA**

#### **1. Women and Child Development Department**

The Women and Child Development Department is the nodal department for formulating plans and programmes for development of women and children in the state. The department is also responsible for implementing different social welfare schemes meant for persons with disabilities. The department is divided into six sections,

- i) Integrated Child Development Services
- ii) Supplementary Nutrition
- iii) Women Welfare
- iv) Disabled Welfare
- v) Child Welfare
- vi) Social Defense

At State level, the department has a Directorate working within the department itself headed by the Director, Social Welfare. This Directorate is constituted of State Commission for Women (SCW), Odisha State Council for Child Welfare (OSCCW), State Social Welfare Board (SSWB), MahilaVikas Samabaya Nigam (MVSN), State Commission for Persons with disabilities, State Commission for Protection of Child Rights and One Directorate for Welfare of the Persons with disabilities.

The department has District Social Welfare Officer (DSWO) to assist the collector in each district. The DSWO has Additional District Social Welfare Officers to implement welfare programmes for people with disabilities in the district. Besides this, there are Social Educational Organizers (SEOs) and Lady Social Educational Organizers (LSEOs) at the block level who assist the block administration in implementing the social welfare schemes.

The activities of the department are supported by financial outlays in the Non Plan and Plan budget of the State government supplemented by the grants-in-aid received from the Central Government through the Ministry of Women and Child Development, the Ministry of Social Justice and Empowerment and the Ministry of Rural Development under a number of Central Sector Schemes.

**WCD Outcome Budget for Welfare of Persons with disabilities (Rs. In Trs.)**

<b>Year</b>	<b>State Plan</b>	<b>Non-Plan</b>	<b>Total</b>
2008-09	217830	52532	270362
2009-10	53146	157198	210344
2010-11	50000	102016	152016
2011-12	50000	124741	174741
2012-13	40604	126800	167404

**State Plan- Expenditure**

**1) Rehabilitation of physically and mentally challenged and social disadvantaged persons**

**Objective**

To rehabilitate physically and mentally challenged, socially disadvantaged persons, which will also include support for orphanages and old houses.

<b>Year</b>	<b>Total Funds Flow (In Trs.)</b>	<b>Total Beneficiaries</b>
2010-11	37340	2859
2011-12	27645	2859
2012-13	20000	Demand Driven

In the year 2010-11, Rs.37340 Trs was spent on this head and this has reached out to 2859 beneficiaries. Where as the amount came down to Rs.27645 Trs in 2011-12 and 2859 beneficiaries got this service. This amount again came down to Rs. 20000 Trs in the year 2012-13 and WCD department has no particular data on the number of beneficiaries. It is only mentioned that the service is demand driven.

## **2) Rehabilitation of leprosy cured**

### **Objective**

To provide social security and financial assistance to persons cured of leprosy.

<b>Year</b>	<b>Total Funds Flow (In Trs.)</b>	<b>Total Beneficiaries</b>
2010-11	1855	242
2011-12	2300	242
2012-13	2400	242

For rehabilitation of leprosy cured WCD department has spent Rs. 1855 Trs. in the year 2010-11 and was able to reach out to 242 beneficiaries. That amount got increased to Rs. 2300 Trs. in the year 2011-12 and Rs. 2400 Trs. in 2012-13, but the total number of beneficiaries still remains the same as 2010-11.

## **3) Maintenance of Physically Handicapped and Mentally Retarded Children**

### **Objective**

To impart free education to children with disabilities to bring them into the mainstream and for maintenance of inmates with disabilities in special schools; and salary of teaching staff of special schools.

<b>Year</b>	<b>Total Funds Flow (In Trs.)</b>	<b>Total Beneficiaries</b>
2010-11	81500	3031
2011-12	98316	3031
2012-13	98316	2753

In 2010-11, 3031 children with disabilities got benefit out of this and an amount of Rs.81500 Trs. was spent on this particular head. While this amount went up to Rs. 98613 in the year 2011 - 12 but the number of beneficiaries remained same i.e 3031. In 2012-13 the spent amount remains same but the number of beneficiaries came down to 2753.

## **4) Training and Rehabilitation of the handicapped**

### **Objective**

To rehabilitate the persons with disabilities

<b>Year</b>	<b>Total Funds Flow (In Trs.)</b>	<b>Total Beneficiaries</b>
2010-11	1545	121
2011-12	1545	121
2012-13	1600	121

The aim of this scheme is to train adult with disabilities in some profitable trades/ crafts so as to make them capable of earning their livelihood. At present 4 Vocational Training Centers run by the voluntary organizations are being provided with financial assistance by the WCD Department for maintenance.

In 2010-11 and 2011-12 the department has spent Rs. 1545 and 121 beneficiaries got benefit out of this in both these financial years. Whereas the amount went up to Rs 1600 Trs in the year 2012-13 but the number of beneficiaries still remains the same as previous years.

#### **5) Care and Protection of Spastic Children**

##### **Objective**

To create awareness among the public as well as the parents spastic children and to provide training and education to the children with cerebral palsy in order to make them self sufficient

<b>Year</b>	<b>Total Funds Flow (In Trs.)</b>	<b>Total Beneficiaries</b>
2010-11	150	300
2011-12	150	300
2012-13	150	--

WCD department has spent Rs. 150 Trs in three consecutive years i.e from 2010-11 to 2012-13 and it was able to reach out to 300 beneficiaries in the year 2010-11 and 2011-12 but there is no information regarding total number of beneficiaries in the year 2012-13.

#### **6) Setting up of Commission for the Disabled**

##### **Objective**

Redressal of grievances and reduction of discrimination

<b>Year</b>	<b>Total Funds Flow (In Trs.)</b>
2010-11	1350
2011-12	5600
2012-13	4000

In the year 2010-11, an amount of Rs. 1350 Trs was spent on this particular head. This amount went up to Rs. 5600 Trs in 2011-12 and again it came down to Rs. 4600 Trs in the year 2012-13.

## 7) Early Detection and Cure of Disability

### Objective

Detection and prevention of disability in early childhood

Year	Total Funds Flow (In Trs.)	Total Beneficiaries
2010-11	1058	12000
2011-12	1058	12000
2012-13	1100	--

In the year 2010-11 and 2011-12 WCD Department spent Rs. 1058 Trs and this scheme reached out to 12000 beneficiaries in both these financial years. Whereas this amount went up to Rs. 1100 in the year 2012-13 but there is no information available regarding the total number of beneficiaries.

## 8) Campaign, Seminar & Sports

### Objective

To develop sports and cultural activities among persons with disabilities for generating awareness

Year	Total Funds Flow (In Trs.)
2010-11	1200
2011-12	1200
2012-13	1300

In the year 2010-11 and 2011-12 the department has spent Rs 1200 Trs for campaigning, organizing seminars and sports. That amount went up to Rs 1300 Trs in the year 2012-13. The State government and district administration claim that they are putting efforts to create awareness among persons with disabilities. Still most of the beneficiaries are not aware of various welfare schemes made for them.

## 9) Scholarship and Stipend

### Objective

To award scholarships to the disabled day scholars studying in schools and colleges with a view to encouraging them to continue their studies and bring them into the mainstream of society.

<b>Year</b>	<b>Total Funds Flow (In Trs.) (State Plan)</b>	<b>Total Beneficiaries</b>	<b>Total Funds Flow (In Trs.) (Non Plan)</b>	<b>Total Beneficiaries</b>
2010-11	5500	2346	9585	4088
2011-12	5500	2346	14180	4088
2012-13	5500	8993	14180	8993

From 2010-11 to 2012-13, WCD department has been spending Rs. 5500 Trs for giving scholarship and stipends to students with disabilities those who are day scholars. In 2010-11 and 2011-12 this reached out to 2346 beneficiaries but in the year 2012-13 the number of beneficiaries went up to 8993. The amount remained stagnant for several years whereas there is a variation in the number of beneficiaries. According to the district officials this scheme is a successful one as this has reached out to large number of beneficiaries.

The State government introduced the scheme during the year 1978-79 to award scholarships to the day scholars among students with disabilities studying in schools and colleges with a view to encourage them to continue their studies and to bring them in to mainstream of society. The State government is granting scholarships to the students from the primary school level up to the university level at prescribed rates through the DSWOs. This is a continuing scheme.

The rate of scholarship to the students with disabilities studying in the mainstream schools has been increased w.e.f. September, 2009 as mentioned below:

<b>Sl.No</b>	<b>Class</b>	<b>Previous Rate/ per Month</b>	<b>Revised Rate/ per Month</b>
1	Primary School (Class I – V)	Rs. 100	Rs. 200
2	Middle and High School (Class VI- VII & Class VIII – X)	Rs. 140	Rs. 250
3	College ( +2 & +3 level)	Rs. 120	Rs. 300
4	College (P.G. level)	Rs. 190	Rs. 350
5	Technical & Vocational Training	Rs. 190	Rs. 350
6	Course outside State (Technical & Vocational)	Rs. 190	Rs. 350
7	Reader allowances ( for Students with visual impairment)		

a. Primary School (Class I- V)	Rs. 15	Rs. 30
b. Middle School ( Class VI – VII)	Rs. 20	Rs. 60
c. High School ( Class VIII – X)	Rs. 30	Rs. 60
d. Other Students	Rs. 30	Rs. 60

### **Banishree Scholarship:**

S.N	District	2011-12		2012-13	
		No. of students	Amount disbursed	No. of students	Amount disbursed
1	Cuttack	569	10,33,340	1,045	23,27,500
2	Ganjam	1489	23,86,030	1,230	13,30,885
3	Kendrapara	166	4,19,880		
4	Khordha	413	10,76,200		
5	Koraput	39	2,10,340		
6	Mayurbhanj	635	3,36,350	1,519	37,00,240
7	Puri	513	5,33,620	586	13,06,000
8	Sundargarh	28	13,020	1,176	25,72,650
	<b>Total</b>	<b>3852</b>	<b>60,08,780</b>	<b>5556</b>	<b>1,12,37,275</b>

### **Grants to Voluntary Organization**

#### **Objective**

To give assistance to central office of 3 State level existing association

Year	Total Funds Flow (In Trs.) (Non Plan)	Total Beneficiaries
2010-11	36	03
2011-12	36	03
2012-13	50	50

#### **4) Training of Teachers for the blind and persons with disabilities**

#### **Objective**

To create special educators those who can impart education to children with disabilities in the State.

<b>Year</b>	<b>Total Funds Flow (In Trs.) (Non Plan)</b>	<b>Total Beneficiaries</b>
2010-11	1566	45
2011-12	632	45
2012-13	--	--

**5) Printing of Braille Books**

**Objective**

To supply text books in Braille print to class VI students

<b>Year</b>	<b>Total Funds Flow (In Trs.) (Non Plan)</b>	<b>Total Beneficiaries</b>
2010-11	307	96 set books
2011-12	320	96 set books
2012-13	320	Demand driven

**6) Maintenance of physically handicapped and mentally retarded children**

**Objective**

To impart free education to handicapped children to bring them in to the mainstream

<b>Year</b>	<b>Total Funds Flow (In Trs.) (Non Plan)</b>	<b>Total Beneficiaries</b>
2010-11	80500	3031
2011-12	98613	3031
2012-13	98613	2753

**7) Special Appliances**

**Objective**

To provide aids or appliances to persons with disabilities in need for their repairment

<b>Year</b>	<b>Total Funds Flow (In Trs.) (Non Plan)</b>	<b>Total Beneficiaries</b>
2010-11	1692	250
2011-12	1692	250
2012-13	1692	--

### **8) National Programme for rehabilitation of persons with disabilities**

#### **Objective**

To provide grass root level rehabilitation services to persons with disabilities in families in villages

<b>Year</b>	<b>Total Funds Flow (In Trs.) (Non Plan)</b>	<b>Total Beneficiaries</b>
2010-11	8230	15000
2011-12	9465	15000
2012-13	9465	--

#### **MadhuBabu Pension Yojana-**

The Madhu Babu Pension Yojana (MBPY) has been introduced in the state of Orissa w.e.f. 1/01/08 by merging the two pension schemes, i.e. Old Age Pension and Orissa Disability Pension schemes. During the financial year 2009-10 Rs 33801.60 lakhs was made as a budget provision for payment of pension @ Rs 200/- per month to 14,08,400 beneficiaries. During the financial year 2011-12 Rs 12000.00 lakhs is proposed. For the year 2012-13 ` 12000.00 lakhs has been proposed under State Plan in the Budget.

#### **Objective**

To provide pension @ Rs 200/ per month to old persons of 60 years of age and destitute including handicapped children and HIV + patients and widows of such patients.

## Disability Pension

Sl.No	District	MBPY			IGNDP		
		Target	Achievement	Vacancy	Target	Achievement	Vacancy
1	Cuttack	12,149	11,998	151	7309	3685	3,624
2	Ganjam	26,976	26,976	0	9,519	4,031	5,488
3	Kendrapara	7,076	7,076	0	3,961	0	3,961
4	Khordha	8,767	8,767	0	6,770	4,058	2,712
5	Koraput	6,567	6,567	0	3,079	3,079	0
6	Mayurbhanj	12,458	12,458	0	5,890	3,034	2,856
7	Puri	9,265	8,743	522	4,854	2,919	1,935
8	Sundargarh	8,388	8,388	0	4,725	3,285	1,440

### Setting of Directorate for Persons with disabilities

For functioning of a separate directorate for Welfare of PWDs funds have been allocated. It is headed by Director for Welfare of PWDs. During the year 2011-12 a provision of 50.00 lakhs was made under State Plan. For the year 2012-13 the provision of 45.50 lakhs has been made under state plan whereas 18.77 lakhs has been provided under Non Plan expenditure.

### Objective

To look after the welfare of persons with disabilities

### **Bhima Bhoi Bhinnakshyama Samarthya Abhiyan (BBSA) Camps**

This is an integrated empowerment campaign for the welfare of PWDs. This has three broad activities:

- I. Provision of certificates and assistive devices to all PWDs through organization of Samarthya Sibirs
- II. Supply of free uniforms to children of special schools
- III. Scholarship for the children with disabilities pursuing higher education.

This campaign envisages the organization of 'Samartya Sibirs' which is a single window approach for providing multi-sectoral services to persons with disabilities, on a campaign mode within a given time frame throughout the state. The main elements are pre-assessment of disability; issue of disability certificate/ID Cards/ Pass Books, Income certificates/ transport concession, selection of persons with disabilities for skill training/bank linkage/pension schemes and supply of aids and appliances.

Samathya Sibiris held in each block twice during the year, in two phases. In the first camp the process of identification, issue of certificate is made and in the 2<sup>nd</sup> camp the assistive devices are provided as per the assessment made for each beneficiary in the 1<sup>st</sup> camp.

This scheme is for PWDs from lower income group who are facing difficulties in their livelihood and not able to give proper education to their children. The government after careful consideration decided that children of persons with disabilities with annual income below Rs. 50,000 pursuing higher education after class 10<sup>th</sup> shall be assisted with education scholarship. Under these scheme students those who are eligible get scholarship @ Rs. 350 per month for a maximum period of 10 months in an academic year. The students availing scholarship from either the central or state govt. under any scheme are not considered.

### **Subsidized Rice**

The State Government on 3<sup>rd</sup> December, 2013 extended the subsidized rice scheme for the benefit of persons having 60 percent disability. This was announced by Women and Child Development Minister Usha Devi in the Assembly. Earlier, persons with 75 percent disability or more were availing benefits from the cheap rice scheme of the State government. Till date 1,04,661 beneficiaries has registered for this scheme and 88,032 beneficiaries were authorized to avail this scheme, whereas there is no information available with the department on the actual number of beneficiaries getting benefit out of this scheme.

Sl.No	District Name	No. of Blocks/ULBs	No. of Blocks registered	No. of Blocks authorized	No. of beneficiaries registered	No. of beneficiaries authorized	No. of beneficiaries left
1	Cuttack	18	18	18	7182	6308	874
2	Ganjam	40	40	40	11768	9945	1823
3	Kendrapara	11	11	11	3016	2417	599
4	Khordha	15	15	15	4545	3893	652
5	Koraput	18	18	18	1856	1856	0
6	Mayurbhanj	30	30	30	6481	4480	2001
7	Puri	15	15	15	5255	4602	653
8	Sundargarh	21	21	21	3121	2669	452

### **DRI Loan**

Differential Rate of Interest (DRI) Scheme was introduced in 1972 and is being implemented by all Indian scheduled commercial banks. The objective of this scheme is to provide bank finance at a concessional rate of interest of 4 percent per annum to the weaker sections of the community for engaging them in productive and gainful activities so that they could improve their economic conditions. The income ceiling for eligibility is annual income of Rs. 24,000 per family in urban or semi urban areas and Rs. 18,000 per family in rural areas. Size of landholding must not exceed one acre of irrigated land and 2.5 acres of unirrigated land. The land holding criteria is not applicable to SCs and STs. The beneficiary largely works on his own and with such help as other members of his/her family. The beneficiary should not have another source of finance while DRI loan exists. The important categories of borrowers under the scheme are SCs/STs and other engaged on a very modest scale in agriculture and/or allied agricultural activities, people who themselves collect or do elementary processing of forest products, people physically engaged on modest scale in the fields of cottage and rural industries and vocation and people with physical disabilities pursuing gainful occupation. The amount of loan is maximum of Rs. 15,000 by way of terms loan and/or working capital. The maximum limit for housing loans under the scheme is Rs. 20,000. In the case of PWDs, a sum of Rs. 5,000 for purchase of aids, appliances and equipment may be granted, apart from the loan amount of Rs. 15,000.

#### DRI through Institutions:

1. Orphanages and Women's homes
2. Institutions for people with physical disabilities
3. State Corporation for SC/ST
4. State Minority Finance/Development Corporation

#### Target

- 1% of the total advances as at the end of the previous year
- 40% of the bank credit under the scheme should flow to the eligible borrowers belonging to Scheduled Castes and Scheduled Tribes
- Not less than 2/3<sup>rd</sup> of the advances under the scheme are to be routed through Rural and Semi urban branches.

#### Repayment

- Maximum of 5 years
- In case of housing loans, the repayment period is extendable to 7 years in hardship cases
- Installments to be fixed monthly or otherwise depending on income generation.

Security: Hypothecation of assets purchased out of loan.

#### DRI Loans for persons with disabilities

Sl.No	Name of the District	Appl. Received	Appl. sponsored to Bank	Appl. Sanctioned	Appl. disbursed	Amount
1	Cuttack	967	967	166	166	21,97,000
2	Ganjam	704	397	50	5	75,000
3	Kendrapara	30	30	--	--	--
4	Khordha	92	92	2	--	--
5	Koraput	226	226	15	15	2,25,000
6	Mayurbhanj	317	317	39	--	--
7	Puri	83	83	6	--	--
8	Sundargarh	10	10	--	--	--

### **District Disability Rehabilitation Centre (DDRC)**

This scheme of DDRC was introduced by Ministry of Social Justice and Empowerment, Government of India in 2000, to provide rehabilitation services and implement the PWD Act, 1995.

#### **Progress of DDRC**

<b>Sl. No</b>	<b>Name of DDRC</b>	<b>Year of Establishment</b>	<b>Building position</b>	<b>Availability of equipment</b>	<b>Vacancy of staff</b>	<b>Remarks</b>
1	Khurda	2002-03	No building	No equipment	5	Site selected recently- 21 lakhs available for building and 4 lakhs for equipment
2	Ganjam	2006-07	Own building (Site Selected)	Well equipped	3	
3	Koraput	2000-01	Own building (Site Selected)	Well equipped	4	Collector has started Disability clinic at GP level by deputing the DDRC Staff
4	Kalahandi	2002-03	Own building (Site Selected)	Well equipped	5	
5	Sambalpur	2002-03	Own building (Site Selected)	Well equipped	3	
6	Mayurbhanj	2003-04	Own building (Site Selected)	Well equipped	3	
7	Kandhamal	2000-01	Own building (Site Selected)	Well equipped	6	DDRC has conducted a corrective surgery of 28 children involving 36 limbs
8	Nawarangpur	2009-10	Own building (Site Selected)	Well equipped	3	
9	Puri					Not yet started (Got approval in 2010-11)
10	Balasore					Not yet started (Got approval in 2011-12)
11	Bhadrak					Not yet started (Got approval in 2011-12)
12	Keonjhar					Not yet started (Got approval in 2006-07)
13	Jajpur					Not yet started (Got approval in 2004-05)

From the above table it is clearly shown that Government does not give proper attention to DDRC. In Odisha, the provision of District Disability Rehabilitation Centre is available only in 13 districts. Among those districts, the work has not yet been started in five districts. In another eight districts, there is shortage of staff. Neither state government nor the district administration shows any interest to fill up those vacant posts in DDRC. In Khordha district, DDRC neither has

its own building nor equipment. Recently they have selected one site for DDRC and also approved 4 lakhs for purchasing equipment.

#### **Transfer of Funds from Directorate to DDRCs in the year 2013-14**

<b>Sl.No</b>	<b>Name of DDRC</b>	<b>Amount</b>
1	Kandhamal	18,38,400
2	Kalahandi	7,02,400
3	Mayurbhanj	16,58,080
4	Ganjam	17,16,400
5	Koraput	22,52,317
6	Sambalpur	1,00,000
7	Nabarangpur	2,00,000
	<b>Total</b>	

#### **Important New schemes/ initiatives for 2012-13 of W & CD Department for people with disabilities**

- 1) **School uniform for Special School Children:** During the year 2011-12 on receipt of financial assistance from CMRF School Uniform has been provided to Special School Children. Hence a Token provision of Rs. 0.01 lakhs is proposed for 2012-13.
- 2) **DDRCs:** For giving financial support for maintenance of District Disability Rehabilitation Centre a token provision of Rs. 0.01 lakhs is proposed for 2012-13.
- 3) **Laptop distribution to Students with visual impairment:** During 2012-13, W and CD department has started a new scheme of distributing free laptops to students with visual impairment to those who are pursuing higher education (including Technical/Professional Courses).
- 4) **Marriage Incentive:** W and CD department in the year 2012-13 has announced a scheme of marriage incentive for persons without disability who marry PWDs.

## 2. Panchayati Raj Department

This department implements various poverty alleviation and infrastructure development schemes for social and economic development of rural people. These schemes aim at income generation by way of self-employment, providing wage employment to needy people through creation of durable community, social and economic assets.

The department carries out its activities through 30 sections at Government level and 30 zilla parishads, 314 Panchayat Samitis, 6234 Gram Panchayats at Field level. It has presidents with zilla parishad members, chairman with panchayat samiti members, sarpanchas with ward members at zilla parishad, panchayat samiti and gram panchayat level respectively. Zilla Parishads and District Rural development Agencies (DRDA) at district level, Panchayat Samities at Block level and Gram Panchayats at village level are the existing structures through which PR department activities are being executed in the field. Besides, there is State Institute for Rural Development (SIRD) at Bhubaneswar, for training and capacity building of PRIs elected representatives and field functionaries at the State-level and three extension training centers at Bhubaneswar, Bhawanipatna and Keonjhar at regional level.

### Poverty alleviation Schemes:

#### a) Mahatma Gandhi National Rural Employment Guarantee Scheme (MGNREGS)

The National Rural Employment Guarantee Act 2005 (No. 42 of 2005) is a path breaking legislation which entitles rural poor with at least 100 days guaranteed wage employment in a year as a means of sustenance averting hunger/ distress and thereby they can ultimately be lifted from the trap of poverty. Under this Act MGNREGS, a CSP Scheme with the ratio of 90:10 between Centre & State has been formulated to provide, livelihood security to the poor households in rural areas whose adult member volunteer to do unskilled manual work, by creating rural infrastructure of durable nature.

(In TRs.)

Year	Total Plan outlay	Central Share	State Share
2010-11	1000,00,00		100,00,00
2011-12	1500,00,00	1350,00,00	150,00,00
2012-13	1600,00,00	1440,00,00	160,00,00

**No. of disabled persons and persondays for financial year 2011-12**

Sl.No	District	No. of registered persons	No of persons worked	No. of Disabled persons registered in NREGA	No. of disabled persons worked in NREGA
1	Cuttack	732490	75877	333	47
2	Ganjam	1357118	172295	1829	162
3	Kendrapara	482516	39160	2982	125
4	Khordha	345203	17452	397	35
5	Koraput	701374	137411	382	135
6	Mayurbhanj	1296033	216432	3388	331
7	Puri	733672	52896	132	4
8	Sundergarh	879017	144182	1098	505
<b>Total</b>		<b>65274323</b>	<b>855705</b>	<b>10541</b>	<b>1344</b>

(Source: Official website of MGNREGA)

**No. of disabled persons and person days for financial year 2012-13**

Sl.No	District	No. of registered persons	No of persons worked	No. of Disabled persons registered in NREGA	No. of disabled persons worked in NREGA
1	Cuttack	767073	78052	358	44
2	Ganjam	1376080	223360	1862	148
3	Kendrapara	498845	44755	3052	275
4	Khordha	360854	23348	400	31
5	Koraput	707286	137310	419	53
6	Mayurbhanj	1304794	257581	3438	309
7	Puri	741645	73139	160	11
8	Sundergarh	921993	141383	1115	68
<b>Total</b>		<b>6678570</b>	<b>978928</b>	<b>10804</b>	<b>939</b>

(Source: Official website of MGNREGA)

This figure clearly shows that in the year 2010-11 total number of PWDs registered under NREGA scheme was 9709 and 3258 PWDs worked in the above mentioned sample districts. In 2011-12, number of PWDs registered under NREGA increased to 10541 but the number of PWDs who worked during that financial year came down to 1344. In the year 2012-13 only 939 PWDs worked, out of 10804 PWDs registered for NREGA. It shows huge decrease in the number of persons with disabilities getting work opportunities under NREGA. We can clearly see the trend of increase in the number of persons with disabilities registering their name for this

particular scheme in a hope that they will get employment opportunity. But the output is not satisfactory because every year the number of persons with disabilities who actually worked is decreasing. On discussions it was found that most jobs are not disabled friendly.

#### **b) Swarnajayanti Gram Swarozgar Yojna (SGSY)**

This scheme is a holistic programme covering all aspects of self employment such as organisation of BPL families into Self-Help Groups (SHG), training, make arrangement for development of infrastructure, giving them necessary impetus for skill up-gradation, to facilitate market link up and bank loan (finance) with back ended subsidy. This is a Centrally Sponsored Scheme with the ratio of **75:25** between Centre and State. The main focus of S.G.S.Y. is to bring the assisted poor families (Swarozgaries) above the poverty line in three years by providing them income generating assets through bank credit and Govt. subsidy. The SGSY is restructured as NRLM.

#### **c) National Rural Livelihood Mission (NRLM)**

It has been launched in the state on April 18-2011. It is the restructured scheme of Swarn Jayanti Gram Swarozgar Yojana (SGSY). The basic purpose of National Rural Livelihoods Mission is to put in place a dedicated and sensitive support structure from the national level to the sub-district level which will focus on the poor, build and sustain their organizations at different levels. Despite several efforts we could not obtain any data. The officials remarked that this being a new scheme it is yet to be documented in the state. Inclusion of persons with disabilities was negated by the officials. Their focus is more on SC, ST, OBC and other minority groups.

#### **d) Indira Awas Yojna**

The objective of the scheme is to provide dwelling units to members of SC/ST/Freed bonded labourers and non-SC/ST rural poor coming under BPL. It is a Centrally Sponsored Scheme with the ratio of **75:25** between Centre and State. The unit cost of IAY normal new construction has been enhanced from 35000/- to 45000/- during 2010-11.

(In TRs.)

Year	Total Plan outlay	Central Share	State Share
2010-11	320,00,00		80,00,00
2011-12	120,00,00	90,00,00	30,00,00
2012-13	600,00,00	450,00,00	150,00,00

**Financial Achievement**

Sl.No	Districts	2012-13				2013-14			
		Total Funds available	Utilization of Funds (Up to end of Dec. 2012)			Total Funds available	Utilization of Funds (Up to end of Nov. 2013)		
			Total	P.H.	%		Total	P.H.	%
1	Cuttack	4813.11	3328.26	17.05	0.51	2633.170	2020.190	8.570	0.42
2	Ganjam	3608.71	2602.15	58.52	2.24	3403.922	2652.600	83.450	3.14
3	Kendrapara	1193.95	859.69	--	--	1213.586	398.580	--	--
4	Khurda	2355.96	1834.95	40.97	2.23	1797.415	1236.060	16.450	1.33
5	Koraput	1942.59	1505.19	7.26	0.48	2646.992	1789.440	3.600	0.20
6	Mayurbhanj	2148.56	1700.63	0.89	0.05	4892.040	3695.970	--	--
7	Puri	2535.02	1698.00	7.75	0.45	1727.335	641.380	1.600	0.24
8	Sundargarh	1358.10	1105.92	12.76	1.15	3815.374	2977.970	11.700	0.39

(Source: Official website of Dept. of Panchayati Raj)

**Total Number No. Of Houses Sanctioned Under IAY**

Sl No	Name of the District	2010-11		2011-12		2012-13		2013-14	
		Houses Sanctioned		Houses Sanctioned		Houses Sanctioned		Houses Sanctioned	
		TOTAL	PH	TOTAL	PH	TOTAL	PH	TOTAL	PH
1	Cuttack	9243	78	9159	61	11174	46	0	0
2	Ganjam	12097	325	11650	214	12724	624	0	0
3	Kendrapara	5939	0	3345	0	4631	-	0	0
4	Khurda	10062	603	8943	602	9395	345	0	0
5	Koraput	5558	16	3505	10	4039	33	0	0

6	Mayurbhanj	9522	3	7374	41	8134	4	0	0
7	Puri	8099	0	6702	30	9098	39	0	0
8	Sundargarh	4536	130	4111	0	4555	58	0	0
	<b>Odisha</b>	<b>165329</b>	<b>1924</b>	<b>132640</b>	<b>1655</b>	<b>155881</b>	<b>1801</b>	<b>1661</b>	<b>18</b>

*Source-Panchyat Raj Department govt of Odisha*

The above table implies that there is no consistency in providing the Indira Awas to the rural poor. In the year 2010-11 it was 1655329 but in the year 2011-12 it was came down of 19.78% again it was goes up by 17.52% than the year 2011-12 but 5.71% less than the year 2010-11.If we look in to the total sanctioned of the houses to the PWDs in the year 2010-11 it was only 1.16% from the total house sanctioned. In the year 2011-12 it was only 1.24 % and in the year 2012-13 it was 1.15% so this shows less attention of the government towards the welfare of PWDs.

According to the District Rural Development Agency officials, there is provision of 3% reservation for people with disabilities in IAY and Mo Kudia. But the people with disabilities are not getting actual benefits out of that reservation, due to several reasons. The first and foremost reason is lack of awareness among the PWDs. In most of the places PWDs were not aware of this fact that they could also get house under IAY and Mo Kudia provision.

#### **e) Mo Kudia**

In order to provide a roof over the head of a needy rural poor who are deprived of getting IAY house, the state government envisaged to implement an unique scheme called “Mo Kudia” from 1.4.2008 out of its own resources (100% state funded. Priority is given to the poor women in distress, physically or mentally challenged (over 40%), victim of domestic or ethnic violence, naxal violence, destitute widows, women-headed households, adult orphans of government registered institutions, victims of fire or flood, victims of leprosy and AIDs for getting Mo Kudia house. The unit cost of ‘MO KUDIA’ has been enhanced to ` 48500/- for 18 Integrated Action Plan (IAP) districts and ` 45000/-for other 12 districts.

(In Trs.)

Year	Total Plan outlay
2010-11	60,000
2011-12	60,000
2012-13	100,00,00

### Financial Achievement under Mo Kudia:

Sl.No	Districts	2012-13				2013-14			
		Total Funds available	Utilization of Funds (Up to end of Dec. 2012)			Total Funds available	Utilization of Funds (Up to end of Nov. 2013)		
			Total	P.H.	%		Total	P.H.	%
1	Cuttack	768.58	367.76	1.21	0.15	730.880	290.780	1.840	0.25
2	Ganjam	1137.36	378.65	6.75	0.59	1214.979	415.950	9.800	0.80
3	Kendrapara	454.39	72.29	--	--	392.260	79.210	--	--
4	Khurda	532.52	192.76	8.00	1.50	473.110	311.240	0.960	0.20
5	Koraput	514.62	204.83	--	--	467.574	195.408	0.300	0.06
6	Mayurbhanj	497.91	207.72	--	--	667.430	327.460	--	--
7	Puri	492.85	145.06	--	--	429.150	170.600	0.600	0.13
8	Sundargarh	431.86	163.62	--	--	457.765	222.050	--	--

(Source: Official website of Dept. of Panchayati Raj)

This table clearly states that utilization of funds for PWDs is very minimal under Mo Kudia. It gives an impression that district officials do not bother about the PWDs getting house under this scheme. It seems that they do not even count PWDs as their target for any financial year.

### Year wise No of Houses Sanctioned under Mo Kudia

Sl No	Name of the District	2010-11		2011-12		2012-13		2013-14 upto April 13)	
		Houses Sanctioned		Houses Sanctioned		Houses Sanctioned		Houses Sanctioned	
		TOTAL	PH	TOTAL	PH	TOTAL	PH	TOTAL	PH
1	Cuttack	948	NA	825	NA	886	NA		NA
2	Ganjam	920	NA	867	NA	1311	NA		NA

3	Kendrapara	535	NA	266	NA	640	-	0	NA
4	Khurda	632	NA	632	NA	859	NA		NA
5	Koraput	1620	NA	400	NA	504	NA		NA
6	Mayurbhanj	647	NA	647	NA	922	NA		NA
7	Puri	611	NA	1012	NA	693	NA		NA
8	Sundargarh	361	NA	361	NA	759	NA	15	NA
	<b>Odisha</b>	<b>14877</b>	<b>NA</b>	<b>13100</b>	<b>NA</b>	<b>15968</b>	<b>NA</b>	<b>23</b>	<b>NA</b>

*Sources Panchyati Raj department govt of Odisha*

(NA Stands for No Data available)

There is no data available with the Panchyati Raj Department about how many houses have been sanctioned to PWDs in the state from the year 2010-11 to the year 2013-14.

#### **f) Backward Region Grant Fund**

This is an innovative scheme of GOI for addressing regional imbalances in infrastructure and development exists inside the states. Govt. of India provides 100% assistance for infrastructure development and capacity building in the selected 19 backward districts of our state namely Balangir, Boudh, Deogarh, Dhenkanal, Gajapati, Ganjam, Jharsuguda, Kalahandi, Kandhamal, Keonjhar, Koraput, Malkangiri, Mayurbhanj, Nabarangpur, Nuapada, Rayagada, Sambalpur, Subarnapur, & Sundergarh.

(In Trs.)

<b>Year</b>	<b>Total Plan outlay</b>
2010-11	324,00,00
2011-12	324,00,00
2012-13	339,95,00

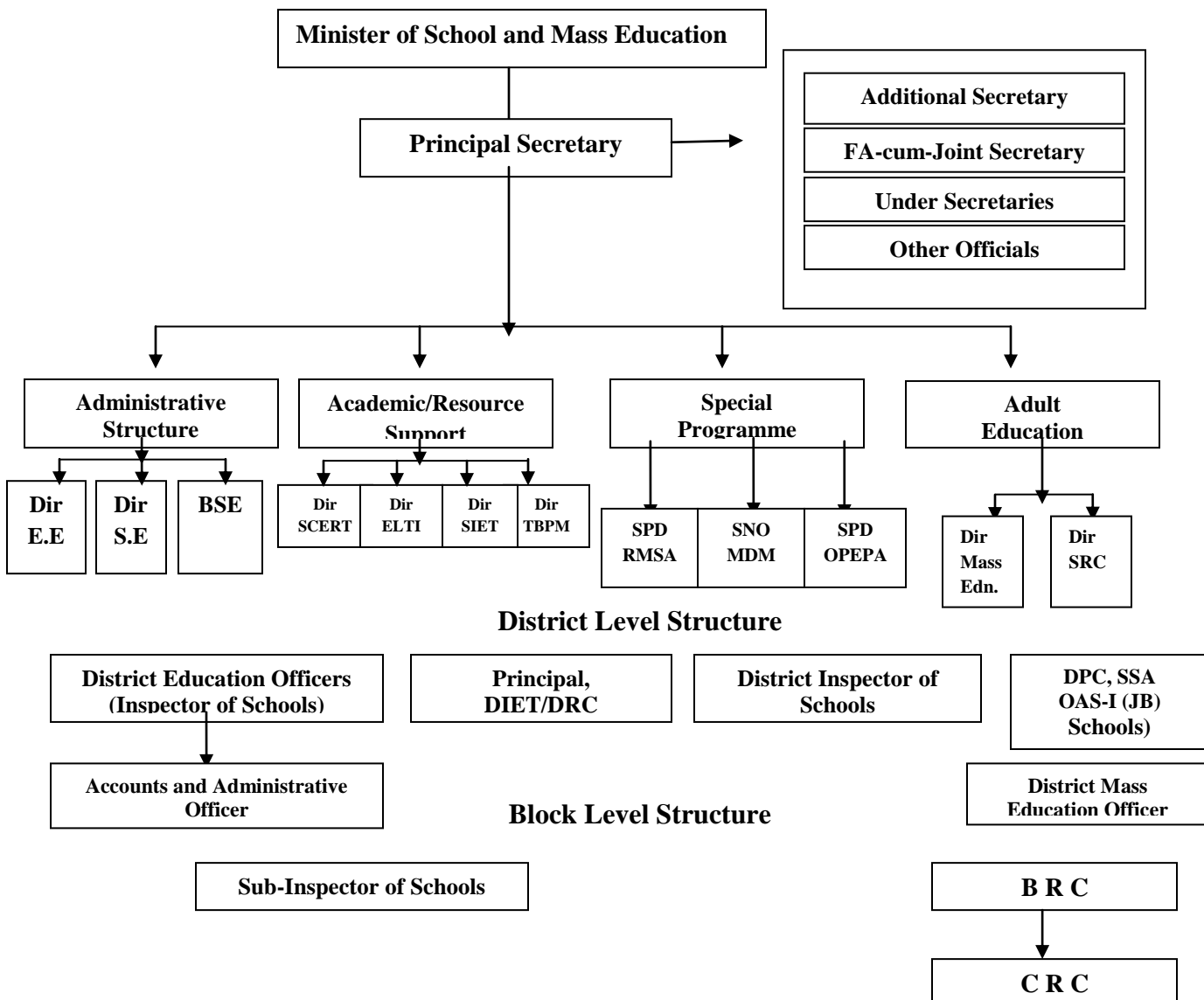
### **3. Department of School and Mass Education**

The School and Mass Education Department is responsible for eradicating illiteracy and provide basic education at Elementary level and thereafter at Secondary level. Apart from this, it provides training to the in-service teachers and fresh candidates to make them competent for

imparting quality education to the school students. This department also formulates the educational policy of the State for Elementary and Secondary Stage.

SECTOR	Actual 2010-11	Budget Estimate 2011-12	Revised Estimate 2011-12	Budget Estimate 2012-13
1	2	3	4	5
Non-Plan	36824156	38201328	39205724	44116838
State-Plan	8036654	12135000	11559318	14625500
Central-Plan	232602	832460	883971	787624
Centrally Sponsored Plan	30000	1905627	2444052	5724027
<b>TOTAL</b>	<b>45123418</b>	<b>53074415</b>	<b>54103065</b>	<b>65253989</b>

### Organogram



## SSA

Sarva Shiksha Abhiyan (SSA) is Government of India's flagship programme for achievement of Universalization of Elementary Education (UEE) in a time bound manner, as mandated by 86th amendment to the Constitution of India making free and compulsory Education to the Children of 6-14 years age group, a Fundamental Right. The key thrust of SSA is on providing inclusive education to all children with special needs in general schools.

In Odisha SSA has been implemented in 30 districts since 2001 with the following objectives:

- All children of 6-14 years age group in school by 2003.
- All children to complete 5 years of schooling by 2007.
- All children to complete 8 years of schooling by 2010.
- Universal retention by 2010.
- Bridge all gender and social category gaps at primary stage by 2007 and at Upper Primary stage by 2010.
- Focus on Elementary Education of satisfactory quality with focus on education for life

### Year wise allocation and expenditure for the SSA Programme (Amount in Crore)

Districts	2007-08		2008-09		2009-10		2010-11		2011-12		2012-13		2013-14	
	Rec	Exp	Rec	Exp	Rec	Exp	Rec	Exp	Rec	Exp	Rec	Exp	Rec	Exp
Cuttack	29.71	26.60	23.85	28.07	40.05	44.73	50.65	30.35	69.77	60.78	63.29	65.48	54.70	
Ganjam	103.66	85.05	44.88	57.30	76.03	75.20	87.98	51.48	130.50	54.53	134.35	137.40	116.81	
Kendrapara	21.03	19.00	22.34	25.46	31.21	32.71	40.48	29.39	46.91	25.34	54.31	61.82	50.96	
Khurda	19.73	21.50	20.65	26.61	30.07	30.27	37.10	27.32	58.28	55.47	58.74	62.97	43.12	
Koraput	29.90	21.84	31.51	32.11	52.07	53.69	75.83	73.76	63.63	67.52	76.32	79.91	85.28	
Mayurbhanj	88.44	77.77	63.82	67.91	80.91	80.25	89.39	68.68	119.45	67.36	139.21	159.58	120.61	
Puri	26.63	25.33	24.98	27.45	39.43	38.57	49.42	26.96	60.61	26.21	68.25	66.29	52.53	
Sundargarh	56.58	55.24	78.70	51.90	50.10	54.78	69.32	34.76	74.64	44.76	70.30	70.39	74.99	

**Year wise allocation and expenditure under IE programme (amount in Lakh)**

Districts	2007-08		2008-09		2009-10		2010-11		2011-12		2012-13		2013-14	
	Rec	Exp	Rec	Exp	Rec	Exp	Rec	Exp	Rec	Exp	Rec	Exp	Rec	Exp
Cuttack	46.47	37.71	47.62	44.91	68.95	68.95	159.99	136.63	197.01	201.48	164.64	164.78	93.15	
Ganjam	149.4	97.49	76.08	58.56	91.32	92.84	296.82	297.59	280.89	252.55	265.80	276.17	168.56	
Kendrapara	38.90	26.82	41.02	38.41	43.21	39.75	121.05	85.92	123.84	73.58	110.66	94.67	74.13	
Khurda	38.91	45.29	44.74	39.15	55.73	47.45	149.88	122.78	148.95	118.66	147.92	135.07	72.29	
Koraput	12.67	10.30	58.46	40.36	61.63	54.04	137.73	119.04	160.95	138.26	135.41	80.54	23.42	
Mayurbhanj	59.90	51.52	88.93	95.62	84.30	84.22	209.85	206.94	262.83	193.45	217.5	210.88	72.97	
Puri	31.73	31.56	32.65	32.54	42.72	42.70	126.84	119.90	149.40	98.13	143.33	112.09	89.66	
Sundargarh	37.62	48.62	113.61	79.98	118.70	95.99	134.61	110.62	146.04	127.18	117.8	117.90	89.96	

These figures clearly state that the office of District Project Coordinator does not spend the approved amount for Inclusive Education Programme. PAB always approves the budget for IE under SSA with an approved list of activities. The IED coordinators at the district level looks after Inclusive Education program. Therefore he or she is responsible for utilizing the approved money for those particular activities.

In the year 2007-08 an amount of Rs. 1057.44 lakh was approved for children with special needs at the rate of Rs. 1200 for 89,386 children with special needs in the state. That year there were 3 major heads of expenditure. Those were: Aids and appliances and Surgical correction (34.8%), Construction of Ramps (28.37 %) and Resource Teacher Salary (17.81%). In organizing medical assessment camps OPEPA had spent 5.67% of its total budget of IE, in the year 2007-08. 3.4% and 2.83% amount was spent on Theme based camps and RCI training respectively.

In the year 2008-09, under IED component an amount of Rs 1262.45 lakh was approved for various activities covering 1,26,245 children with special needs @ Rs. 1000/- per child. In the year 2007-08 and 2008-09 the major focus was on three aspects:

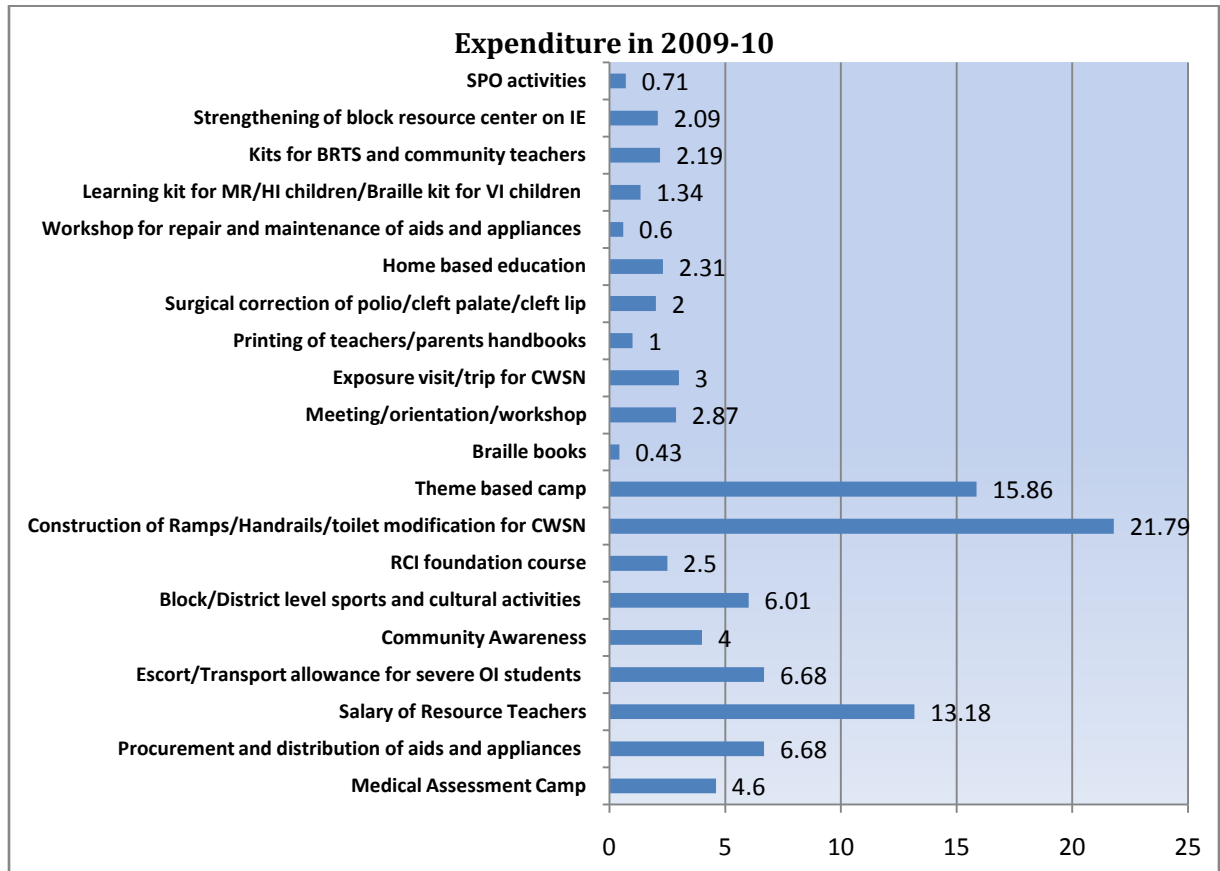
1. Aids and appliances (18.19%)
2. Construction of Ramps (30.56%)
3. Salary of Resource Teachers (22.32%)

For the first time in the financial year 2008-09 few components got included, those were:

- Escort/Transport allowances for severe VI/OI CWSN – 4.5%

- Community awareness (Sports, Parent counseling) – 2.99%
- Exposure trip for children with disabilities/BRTs – 1.08%

In the year 2009-10 PAB approved an outlay of Rs. 1496.892 lakh under Inclusive Education for 124741 CWSN.



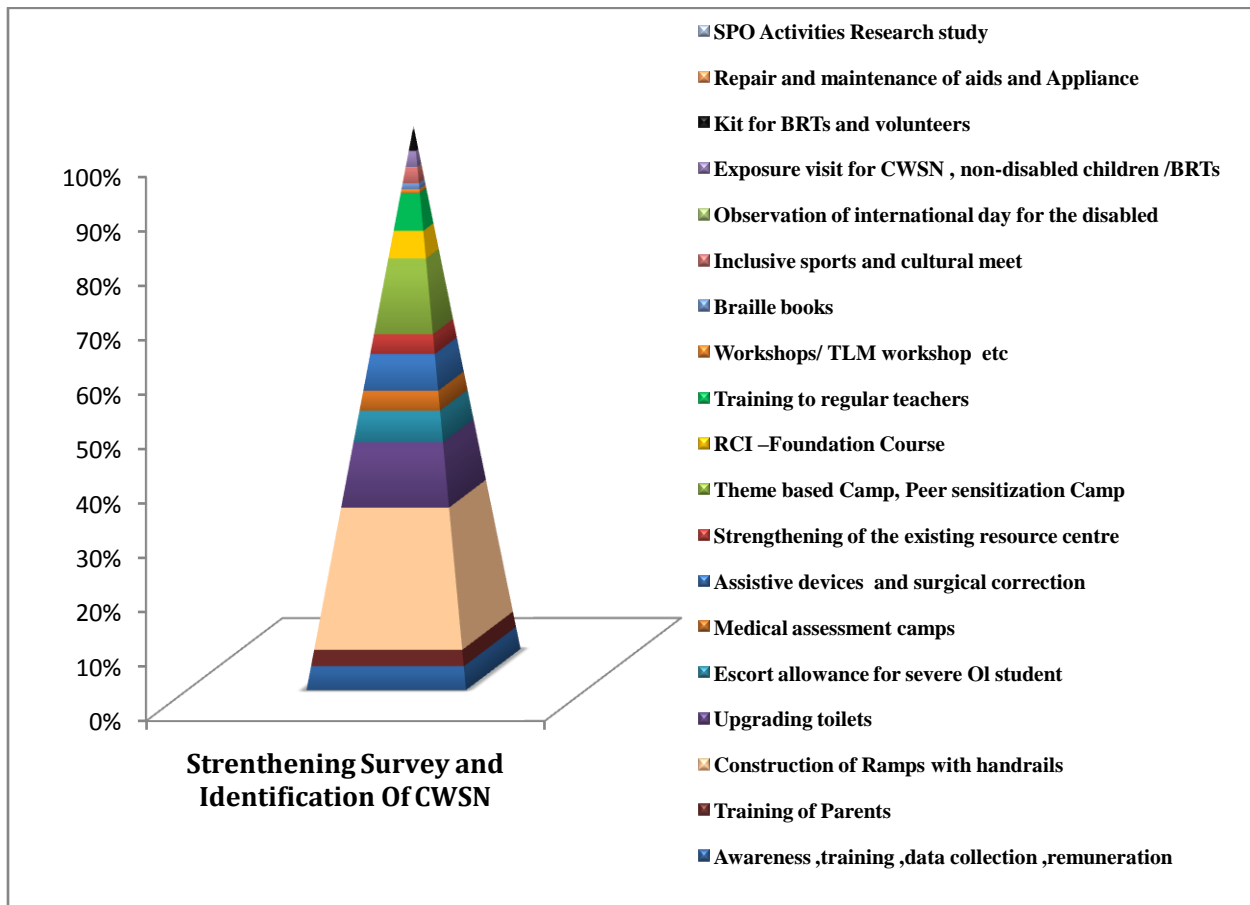
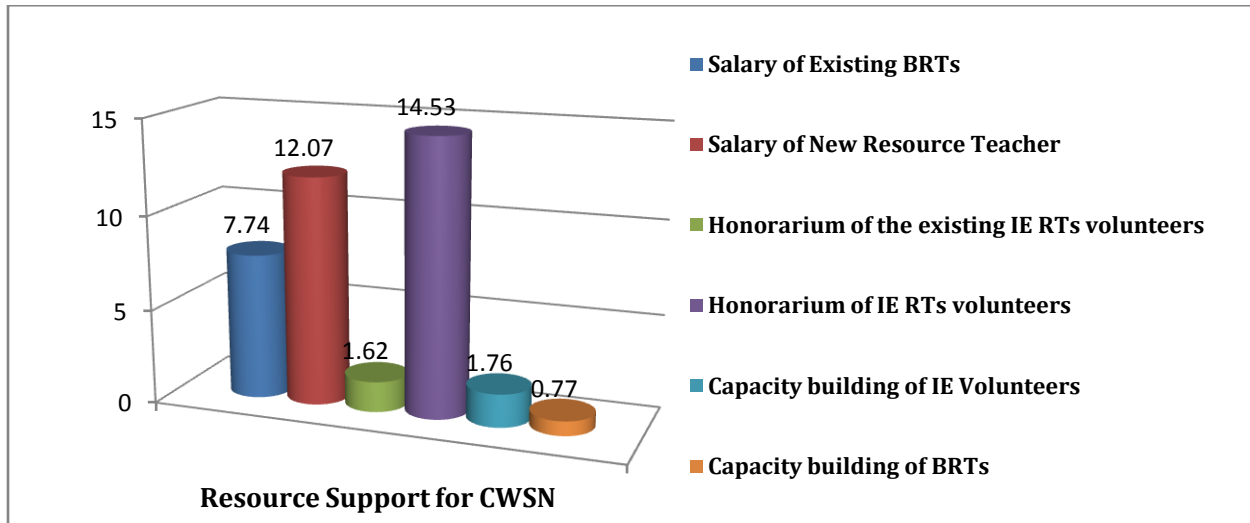
During 2009-10, the major heads of expenditure were as follows:

1. Construction of ramps/ handrails/ toilet modification for children with special needs
2. Theme based camps
3. Salary of resource teachers

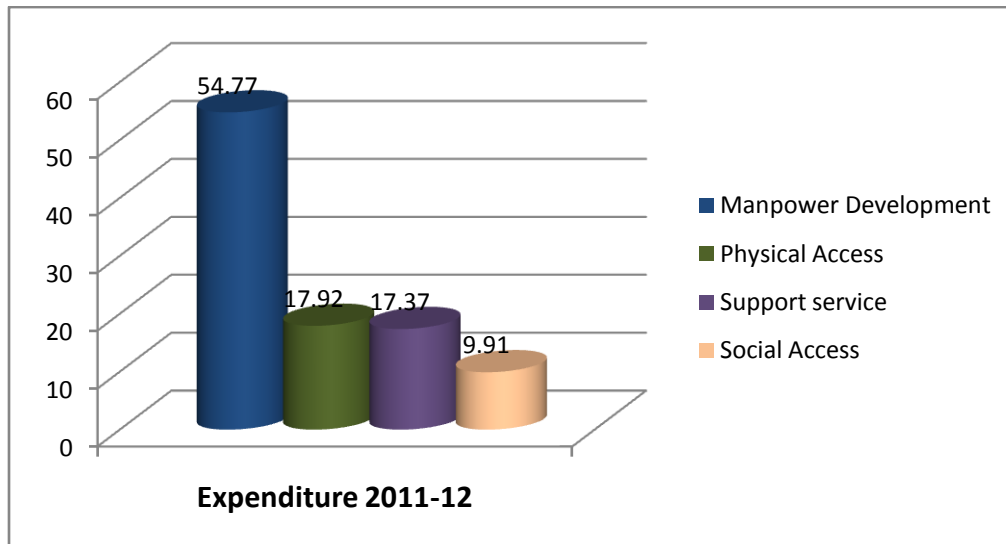
During 2010-11 an outlay of Rs.3693.030 lakh was approved under Inclusive Education for 123101 CWSN identified at a unit cost of Rs. 3000/- per child. That year the activities were organized under two broad heads, those were:

- Resource Support for Children with special needs
- Strengthening survey and identification of children with special needs

## Expenditure 2010-11



For 2011-12, Rs. 3928.17 lakh was approved under Inclusive Education for children with special needs.



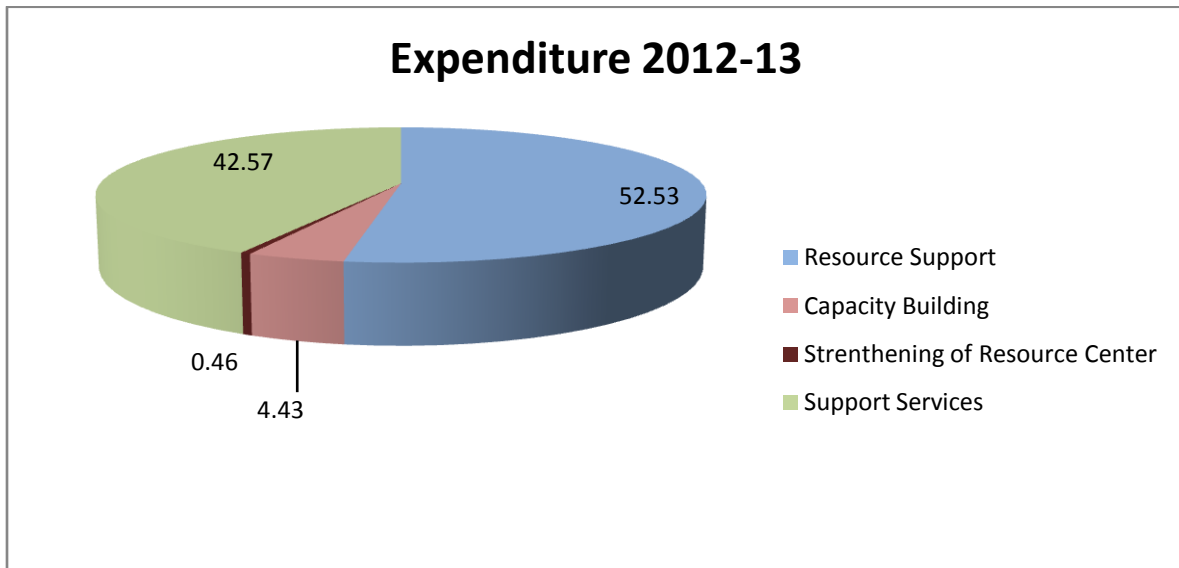
It is clearly shown in the above graph that 54.77% of the total budget was spent for manpower development. This particular head includes salary of BRTs, honorarium of IE volunteers, capacity building of IE volunteers, BRTs, training to Parents, RCI foundation course training to Regular Teachers, training to Regular teachers and workshops/TLM workshop/Orientation meeting/ DRG training at district and block level.

17.92% was spent on physical access which included escort allowance for severe OI/VI/CP students, medical assessment camps and assistive devices for children with special needs including Braille kit for students with visual impairment, special/corner chair for CP, ear mould for HI, and surgical correction.

The third major head was support services which included construction of model resource center at district level, upgrading the BRCs to RCI study centers in 14 districts, strengthening of resource center on IE and Braille books/ large print materials for VI students.

9.91% was spent on social access that included theme based camp/peer sensitization camp, pre-vocational training camp for children with special needs, sports and cultural meet for CWSN, observation of International Day for the persons with disabilities, exposure visit for CWSN /BRTs/IE coordinators, poster/ newsletter/ printing of teachers/parents handbook/ success stories and IEP files.

Total Budget for the year 2012-13 was 3432.744 lakh.



During 2012-13 there were 4 broad categories under which various activities were organized and conducted. The first category was Resource support which included salary of existing BRTs, honorarium of IE volunteers. 52.53% of the total budget was spent on this particular head.

The second head i.e capacity building consisted of capacity building of IE volunteers and BRTs, training program for parents, RCI foundation course training to teachers / IEVS. OPEPA has spent 4.43% was on this head. Strengthening of Resource Center was the third broad category which includes materials, equipment, furniture for existing district Resource center on IE. Only 0.46% was spent on this particular head.

42.57% was spent on Support Services head. This included medical assessment camps, assistive devices, low vision aids, surgical correction, Escort allowance and transport allowance for severe OI/TB/CP/MR students, theme based camp, peer sensitization camp, Braille training camp, skill development camp, large prints materials, Braille books, inclusive sports and cultural meet for CWSN, observation of International day for the persons with disabilities, Exposure visit for CWSN/BRT/IEVs, summer camp for CWSN and Braille kit for children with visual impairment.

**Year wise no. of children with disabilities enrolled and drop out under IE Prog.**

Year	Enrolled In
2007-08	123661
2008-09	115344
2009-10	116801
2010-11	115538
2011-12	126162
2012-13	119863
2013-14	103959

**District wise, year wise no. of children with disabilities enrolled and drop out under IE**

Districts	2007-08		2008-09		2009-10		2010-11		2011-12		2012-13		2013-14	
	In	Out	In	Out	In	Out	In	Out	In	Out	In	Out	In	Out
Cuttack	4944		4662		5495		5087		6470		5784		4903	
Ganjam	6446		6644		7380		9182		9363		9493		8872	
Kendrapara	3003		4046		3558		3961		4080		3908		3902	
Khurda	3025		4121		4281		4823		4869		5268		3805	
Koraput	3741		4409		6372		4301		4976		4630		1233	
Mayurbhanj	7083		7315		6702		6700		8451		7664		3841	
Puri	3279		3205		3525		4154		4895		5039		4651	
Sundargarh	6203		10145		9379		4250		4762		4207		4452	

Odisha Primary Education Programme Authority (OPEPA) has no information on the number of children with disabilities those who have dropped out from elementary education.

**Year wise total allocation and expenditure for SSA**

Year	State Share (Amount in Crore)	Central Share (Amount in Crore)	Total Allocation	Total Expenditure
2007-08	330.25	607.23	937.48	769.57
2008-09	276.74	490.81	767.55	815.27
2009-10	413.91	630.62	1044.53	1088.93
2010-11	359.78	731.78	1091.56	942.80
2011-12	540.02	927.20	1467.22	1066.14
2012-13	705.00	1043.08	1748.80	1848.12
2013-14		889.96	1592.17	

**Year wise total allocation and expenditure for IE**

Year	State Share (Amount in Crore)	Central Share (Amount in Crore)	Total Allocation	Total Expenditure
2007-08	1057.44	Not specified	Not specified	963.63
2008-09	1262.45	Not specified	Not specified	1262.45
2009-10	1496.89	Not specified	Not specified	1406.75
2010-11	3693.03	Not specified	Not specified	3177.94
2011-12	3928.17	Not specified	Not specified	3038.62
2012-13	3432.74	Not specified	Not specified	2956.42
2013-14	1995.36	Not specified	Not specified	

**Expenditure on Inclusive Education:**

Year	Total Plan outlay (In Lakhs)	Amount per Child	No. of children with disabilities
2007-08	1057.44	1200	89,386
2008-09	1262.45	1000	1,26,245
2009-10	1496.892	1200	1,24,741
2010-11	3693.030	3000	1,23,101
2011-12	3928.17	3000	1,30,939
2012-13	3432.744	2800	1,22,598

**Total number of children with disabilities in sample districts (as of today):**

Sl.No	District Name	No. of CWSN identified	Enrolled	Out of school
1.	Cuttack	214251	214251	0
2.	Ganjam	67697	66862	835
3.	Kendrapara	17156	17135	21
4.	Khurdha	33276	33239	37
5.	Koraput	110504	109432	1072
6.	Mayurbhanj	268724	268200	524
7.	Puri	152441	152441	0
8.	Sundargarh	183915	182730	1185
	<b>Total</b>	<b>1047964</b>	<b>1044290</b>	<b>3674</b>

(Official website of OPEPA)

This above table clearly shows that in many of the sample districts the dropout rate is higher. Cuttack and Puri are the only districts where no child with disability is out of school. These children with disabilities were identified by the IE Volunteers. They were also responsible for enrolling the children in school and work on their IEP. But due to lack of funds those IE Volunteers are no more working in the grass root level. Their disengagement directly or indirectly hampers the implementation process in those districts where BRTs and BRCs are not in sufficient numbers. The general teachers have got orientation on how to impart education to children with disabilities in most of the districts of Odisha. Still they are not well equipped to do so. In many instances the general teachers do not have interest or patience to teach a child with disability. They have this assumption that special teachers are the ones who should teach children with disabilities, that is why they do not even bother to update the IEP of children with disabilities. Neither have they had a cordial relation with the special educators nor do they coordinate with the special teachers or resource teachers.

#### **4. Department of Health and Family Welfare**

##### **Budget**

<b>Year</b>	<b>Non Plan</b>	<b>State Plan</b>	<b>Central Plan</b>	<b>CSP</b>	<b>Total</b>
2010-11	10,314,861	362,29,72	25,850,78	10,000	165,329,11
2011-12	10,84,148	20,11,604	25,85,078	10,000	56,90,830
2012-13	11,987,503	56,40,231	261,25,74	10,069	202,50,377

*(Source: Budget Document-Health & Family Welfare Department)*

##### **NRHM**

The National Rural Health Mission (NRHM) has been in operation since June 2005 in Odisha to provide accessible, affordable and accountable quality health services to the poorest households in the remotest rural regions. Broad objectives of the NRHM in Odisha are as follows:

- Reduction in maternal and child mortality
- Universal access to affordable and quality health care services
- Prevention & control of communicable & non-communicable diseases
- Access to integrated comprehensive primary health care
- Population stabilization
- Promotion of healthy life styles

NRHM activities are classified in 4 groups, such as (i) Reproductive and Child Health II programme, (ii) Immunization, (iii) **National Disease Control Programmes(NDCP)**, (iv) Integrated Disease Surveillance (IDS) project.

### NRHM BUDGET

Year	RCH	NRHM Initiative	Immunization	Disease Control Programme	Non-Plan	NRHM Grand Total
2011-12	28,05,550	33,08,631	2,16,444	5,94,413	10,84,148	69,25,039
2012-13	21,11,039	62,32,909	17,15,53	12,53,478	11,59,98,46	97,68,978

Disease control programme includes three programmes which have disability component in it. Those are as follows:

Sl.No	Name of the Scheme	Financial Outlay (in Trs.)		Total
		2011-12	2012-13	
1.	National Leprosy Eradication Programme (NLEP)	20,437	2,10,13	41,450
2.	National Programme for Control of Blindness (NPCB)	1,34,764	11,46,85	2,49,449
3.	National Iodine Deficiency Disorder Control Programme (IDD)	699	26,53	3352

### **A. National Leprosy Eradication Programme (NLEP)**

The National Leprosy Eradication Programme has aimed to achieve the goal of leprosy elimination whereby the prevalence rate one or below one per 10,000 populations. In Odisha, Multi Drug Therapy Project was introduced in 1983 first in Ganjam district and subsequently it was extended to other districts in a phased manner with the objective to achieve elimination of leprosy in state. The programme now is being implemented through General Health Care System with supports of 981 NLEP staff of different categories. To treat the complicated leprosy cases, 13 temporary hospitalization wards (20 bedded) and one 100 bedded Leprosy Home & Hospital, Cuttack are also functioning in the state. The integration of leprosy elimination services with general Health Care System, ICDS & Panchayati Raj System has been strengthened.

#### **Objective**

- To achieve leprosy elimination status at all districts as well as blocks in next 5 year
- Reduce burden of disability amongst new cases by 35% in next 5 years

### **B. National Programme for Control of Blindness (NPCB)**

National Programme for Control of Blindness was launched in the year 1976 as a 100% Centrally Sponsored scheme with the goal to reduce the prevalence of blindness from 1.4% to 0.3%.

- To reduce the backlog of blindness through identification and treatment of blind.
- To develop Eye Care facilities in every district.
- To develop human resources for providing Eye Care Services.
- To improve quality of service delivery.
- To secure participation of Voluntary Organizations in eye care.

#### **The four pronged strategy of the programme is:**

- Strengthening service delivery,
- Developing human resources for eye care,
- Promoting outreach activities and public awareness and
- Developing institutional capacity.

### **C. National Iodine Deficiency Disorder Control Programme (IDD)**

The National Iodine Deficiency Disorders Control Programme was started in Odisha since 1989 with 100% central assistance.

#### **Objective**

- The aim of the programme is to prevent, control & eliminate Iodine Deficiency Disorders(IDD) which may cause Abortions, Still births, Mental retardations, Deaf, Mutism, Squint, Dwarfism, Goitre, Neuromotor defects in the State.
- To conduct the I.D.D Surveillance through Medical Colleges/Research Institutions in endemic districts as per guide line of Govt. of India.

In order to achieve above objective an IDD Control Cell is functioning under the direct supervision of Joint Director of Health Services (PH) Odisha.

**Immunization:** This is one of the most important public health programmes in Odisha. The stated goal of the state is to achieve full immunization by 2010. Immunization is a key intervention under NRHM and includes:

- Intensified Pulse Polio Immunization (IPPI)
- Maintenance of the Cold Chain procedure
- Catch up Immunization
- Special Immunization to meet the unmet needs of the children in difficult rural pockets

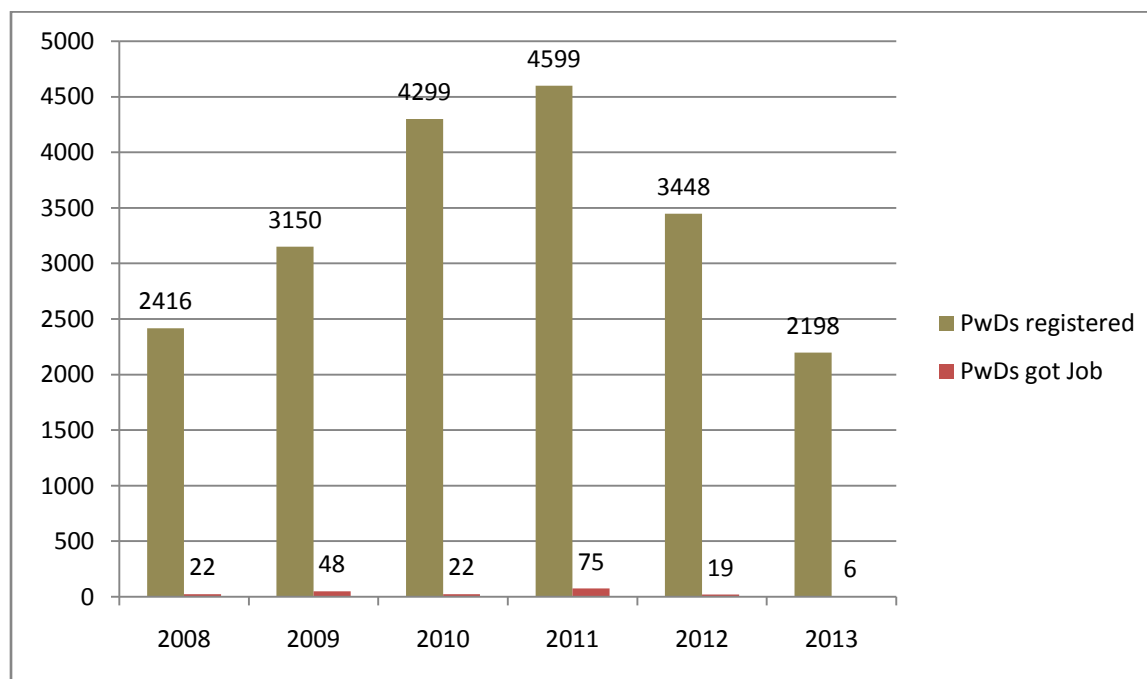
#### **Outcome budget of Dept of Health and Family Welfare**

<b>Sl.No</b>	<b>Name of the scheme</b>	<b>2011-12</b>	<b>2012-13</b>
1.	Immunization	1,53,544	11,06,41
2.	IPPI	62,900	6,09,12
<b>Total</b>		<b>2,16,444</b>	<b>1,71,553</b>

**Awareness Generation through Media:** More stress has been laid on the Electronic Media i.e. Telecast of TV spot, in Doordarshan & local channels & Broadcast of Radio Jingle, in AIR & FMs and also Print Media for making people aware of the problems like Swine Flu, IMR, Pulse Polio Programme, Blindness Control programme, Heat Stroke, PNDT, No Smoking Campaign, Flood and Flood related common diseases, etc.

### 5. Dept. of Labour and Employment

Year	Total number of PWDs registered	Number of PWDs got Job
2008	2416	22
2009	3150	48
2010	4299	22
2011	4599	75
2012	3448	19
2013	2198	6
<b>Total</b>	<b>20110</b>	<b>192</b>



The above table clearly shows that over the year employment of PWDs has not been in the priority area of the Govt. Till date only 192 PWDs has been placed out of 20110 PWDs registered with Special Employment Exchange and the success rate is 0.954%.

## **6. Department of Handloom, Textile and Handicrafts**

### **Mahatma Gandhi Bunkar Bima Yojana (MGBBY)**

The Government of India had introduced the 'Bunkar Bima Yojana' in December, 2003 which was a combination of Janshree Bima Yojana and Add-on Group Insurance Scheme being implemented in collaboration with the Life Insurance Corporation of India. Since, 2005-06 this scheme was revised and has been implemented revised with title "Mahatma Gandhi Bunkar Yojana".

#### **Objective:**

The basic objective of the 'Mahatma Gandhi Bunkar Bima Yojana' is to provide enhanced insurance cover to the handloom weavers in the case of natural as well as accidental death and in cases of total or partial disability.

#### **Benefits:**

<b>Sl.No</b>		<b>Benefits from 1.10.07</b>
(i)	Natural Death	Rs.60,000/-
(ii)	Accidental Death	Rs. 1,50,000/-
(iii)	Total Disability	Rs. 1,50,000/-
(iv)	Partial Disability	Rs. 75,000/-

## 7. Department of ST and SC Development

The ST and SC Development Department has been providing and evaluating various developmental programmes for scheduled tribes, scheduled castes, minorities and backward classes of the state. The department is headed by the Commissioner-cum-Secretary supported by Special Secretaries, Director-cum-Additional Secretaries and Financial Advisor-cum-Joint Secretary. Besides, there are three Joint Directors in the RDC Level and 30 District Welfare Officers (DWOs) one in each district.

### Flow of Funds

The department of ST and SC Development and Minorities and Backward Classes Welfare receives funds from various sources. The sources of fund receipts under various schemes under State Plan, Centrally Sponsored Plan, Central Plan and Non-plan and schemes of Government of India in the Ministry of Tribal Affairs (MoTA), Ministry of Social Justice and Empowerment, Ministry of Minority Affairs, Externally Assisted Projects and Special Central Assistance.

Year	State Plan (Including State share of CSP schemes)	CS of CSP	Central Plan	Non- Plan	Total Outlay
2012-13	78477.00	1910.29	14875.76	65308.07	160571.12
2013-14	83000.00	2806.61	41744.14	--	127550.75

### Interview with Deputy Director, OPEPA

- **Non availability of Professionals in the state-** There is vacancy of 2 District Coordinator post in the district of Nawrangpur and Rayagada. In the block level there is shortage of staff like Block Resource Teacher (BRT), Sanctioned post is 948 but there are only 604 BRTs in place now, likewise the post of Block Resource Person (BRP) is lying vacant. Only 116 BRPs are available whereas the sanctioned post is 632. It is only due to low salary and lack of career growth.
- **Developing district level plan and proposal -**The officials are fully informed about the needs across different Blocks within their respective Districts. The officials have review meeting regularly where they discuss all these aspects. In this way the officials get to

know about all the blocks. While preparing the district level plans and proposal, the government officials always keep the needs and requirements of each of the block in mind.

- **The process of annual plan and proposal-**The annual plan and proposal for a district is prepared on the basis of feedback given by the district officials, feedback from the major stakeholders and also on the basis of need assessment of that particular district. This process usually takes 2-3 months at the district level. According to the Deputy Director, there is no deficiency in the planning process.
- **Shortage of funds in specific components-**Some effective and relevant components of Inclusive Education do not have any grants provision in the current financial year, which directly or indirectly affects the development of children with disabilities. Earlier the escort allowance was Rs 300/- per month for 10 months but from this year onwards that will be Rs 250/- per month for 10 months. For the current year, there is no budget provision for Therapeutic Resources. This Therapeutic Resources includes Physio therapy, speech therapy, child counseling and parents' counseling. Apart from this, budgetary allocation for sports activities and exposure visits has been cut down.
- **Role of Local Community-** Participation from the local community is very much needed for implementing the schemes. Without their support and cooperation it is not possible to implement those schemes.
- **Capacity building and awareness generation-** Proper implementation can never happen if the local leaders are not efficient enough or if there is no awareness about the particular scheme. Government publicizes its schemes and programmes still the mechanism needs to be strengthened.
- **Major Obstacles in implementation-** Acute shortage of staff in districts and mostly in block level imposing challenges to implement the schemes. Non availability of trained personnel to impart education to the students with disabilities. Shortage of funds is also another factor which affects the implementation process. Beneficiaries are not getting aids and appliances or some other facilities only because of Procedural problems.

- **Suggestions to improve the implementation-**

- I. Organizing capacity building programme for the programme implementing staff in regular interval
- II. Establishment of teachers' training institutes in the state
- III. More budgetary allocation for the better implementation of schemes

### **Interview with Director of Welfare of persons with disabilities**

- **Adequate Staff / Professional-** There is no shortage of staff at state and district level; but down the block there is no one. There is also shortage of qualified professionals in the state. So the officials need to go through capacity building programmes. Lack of adequate staff is one of the major obstacles in implementing the welfare schemes for persons with disabilities. Government is providing low salary which results in non availability of qualified professionals. This hampers the effectiveness of the schemes.
- **Annual Plan and Proposal-**At first, the district level officials prepare the plan as per the need of beneficiaries, and then they send it to concerned Department through Directorate. After this, the department sends it to the Finance department for its approval. This whole process takes 5 to 6 months duration.
- **Participation of Local Community-** Full participation is needed from the local community for implementing the schemes. Department is trying its best to obtain their participation. There is also a need of capacity building of community leaders so that they can help the officials in implementation process. They can also help the district administration in creating awareness among the people with disabilities as the community leaders are familiar with the beneficiaries. Government as well as the NGOs are playing vital role in creating awareness among the persons with disabilities about the various schemes and facilities starting from the reservation provision to subsidized rice.
- **Shortage of Funds in specific components-** Budget provision for different schemes has not increased this year but the schemes like Banishree (Scholarship to Children with disabilities) and Vocational training to youth with disability has got fewer budgets than

requirement. Budgetary allocation is not sufficient for Non-wage component as well as for Wage/salary component.

- **Effective schemes-**Among all the welfare schemes for persons with disabilities there are only two schemes which are proved as effective schemes. Those are Odisha disability pension (ODP) and Subsidized Rice scheme. Both the schemes are reaching out to maximum number of beneficiaries.
- **Major obstacles-** No doubt Lack of funds is one of the major obstacles faced by the directorate. This directly or indirectly hampers the implementation process of welfare programmes. The Directorate also faces shortage of adequate professional and staff at the block level. Mobility is a major issue at field level. The officials do not get sufficient remuneration for their mobility at field level.
- **Suggestions to improve the situation-**
  - I. Government should increase the budgetary allocation, which would help the department to recruit qualified professionals in order to implement the various schemes.
  - II. There is a need to have inter-departmental meetings more frequently.

## Chapter: 5

### DISCUSSION WITH DISTRICT ADMINISTRATION

#### 1. Khurdha

##### **Key points of Discussion:**

- Shortage of staff acts as a major obstacle in front of ADSWO, while implementing various welfare schemes. There is no other staff to help him or her with the work process. ADSWO single handedly has to do lot of paper work which ultimately puts a large burden on him or her.
- The ADSWO also faces mobility problem in the Khurdha district. This factor affects the implementation process in some way or other.
- There is no shortage of funds for welfare schemes for PWDs.
- Grievance Redressal meeting provides immediate results to each of its beneficiaries.
- Disengagement of IE Volunteers is the major obstacle, due to which a lot of extra burden has been added on to the functioning of BRTs and BRPs. The IE Volunteers were responsible for various things starting from identification and enrollment of children with disabilities to updating IEP for each of the children.
- Apathy and negative attitude of higher authority hampers the process of implementation. The higher authority is mainly concern for outcome or result rather than individual development and progress of children with disabilities.
- Negligence of general teachers towards children with disabilities works as a deterrent. Teachers have lots of burden which compels them to neglect the needs of children with disabilities in the classrooms. They have this assumption that special educator only are capable of imparting education to children with disabilities.
- Age appropriate class for children with mental retardation is another major issue. In RTE act it is mentioned that, where a child above six years of age has not been admitted in any school or though admitted, could not complete his or her elementary education, then he or she shall be admitted in a class appropriate to his or her age. But in the case of children with mental retardation their developmental age is not as same as their chronological age.

That is why they have to go through lots of difficulties when we put them into a class, keeping their chronological age in mind.

- Shortage of funds is also an obstacle in front of IED Coordinator. Due to lack of funds many important components such as Theme based camp and exposure visit has been eliminated for 2013-14. Those two components were really very effective for the development of children with disabilities. Earlier International Day for Persons with disabilities were observed for two days, but this year due to budget constraint that has been come down to only one day.
- No proper evaluation of children with disabilities. There is no such mechanism available to evaluate the progress of children with disabilities.

## **2. Ganjam**

### **Key points of Discussions:**

- The office of the ADSWO stuck with ample of work but shortage of staff. Literally apart from ADSWO there is no single staff to deal with the issues at district and block level. For example in the district of Ganjam there are 22 blocks, 17 NACs and 1 municipality and more than 1 lakh people with disabilities; but there is only 1 staff to deal with this entire segment.
- The budgetary allocation is not sufficient for every scheme so ADSWO is taking help of other departments like SSA or Red Cross to implement the project and it is only possible with the intervention of collector.

## **3. Sundargarh**

### **Key points of Discussions:**

- ADSWO has no one to assist him with the implementation of welfare schemes meant for people with disabilities. Thus lack of man power ultimately results in ineffectiveness of government schemes and programme.
- People with disabilities in this particular district are aware of different welfare schemes.

- Through home based education BRTs and BRPs impart education to children those who have severe disabilities.

#### **4. Kendrapara**

##### **Key points of Discussions:**

- The issues of PWDs is getting priority among the government officials whereas lot more has to be done at the field level so that the PWD get adequate information on the various schemes and provisions.
- Various departments need to have regular meetings in order to discuss the problems of PWDs and find out ways to solve those problems.
- No doubt the grievance cell is working very effectively, but the frequency needs to be increased and this should reach out to the remotest area of the district.
- Political pressure acts as a major obstacle in front of DSWO while implementing the welfare schemes for PWDs.
- Bi monthly meetings and workshops help the DSWO to coordinate with other departments as well.
- The District collector is like a guardian of the district, so it completely depends upon him or her to sensitize the government officials regarding disability issues.
- There is a need to recruit more special teachers in the district.
- The DPC office does not face any shortage of funds because state provides funds as per the need and demand of the district.
- Lack of man power at field level is a major problem faced by DSWO and DPC Office.
- No doubt the work pressure has been doubled after disengagement of IE Volunteers; still BRTs are capable enough to tackle the situation.
- There is shortage of funds in various major heads such as extracurricular activities, identification and medical treatment. These areas not only need more attention and but also sufficient funds.
- Professionals should be appointed as BRTs, so that they do not have to face any difficulty while dealing with children with disabilities.

- There is need to strengthen the monitoring and evaluation process of each and every schemes and programme. Therefore, State Resource Group has to be provided with more power. This group has to do districts visit frequently in order to speed up the existing plan and project.

## **5. Koraput**

### **Key points of Discussions:**

- Budget allotment in disability component is not insufficient for carrying out project work in the district of Koraput.
- As the ADSWO office is new establishments it will take time for it to strengthen itself and its service delivery approach.
- DSWO office has many programmes for the welfare of PWDs so this office has to Coordinate with many line department such as Education, Health, Rural development department etc. for effective implementation of the project. The Collector's office is central to ensuring effective coordination between various departments.
- In the district of Koraput they are trying to get 100% achievement and quick grievance redress of the issues in every Monday at Collectorate and in other scheduled days at block and Panchayat level and this grievance cell is a boon for the PWDs for to get their benefits.
- Through Bhima Bhoi Samarthya Sibir mass certification and other benefits has been given to the PWDs.
- Shortage of field level staff is a problem to check the implementation work.
- ADSWO pointed out that some aids and appliances are not being distributed due to unwillingness of the PWDs candidates for the same.
- Government is not taking firm step to create awareness among the stake holder about scheme meant for PWDs.
- Financial allotment for inclusive education is not sufficient to carry out all the activities as per the target despite of it this year they did 14 medical assessment camp, theme based

camp in every cluster, Speech therapy camp in every block, Parents counseling and exposure visit.

- This year after June SSA disengaged IEV volunteer due to non-allotment of budget but it will not affect work as they were conducting parents counseling at cluster level.
- There is shortage of staffs like-BRT, BRCC and special teacher which is hampering the work.
- There is no flexibility in work, they have to abide to the plan and approve of the budget and work in accordance to that.
- Escort allowance and Medical assessment camps are the effective programme.
- Shortage of trained teacher/staff as per the number of student and geographical situation is the bottleneck in this project e.g-43 is the sanctioned BRT post out of it only 13 is there in work.
- As MGNREGA is a demand driven project so PWDs needs to take initiative from their side. They can work at project side. DRDA does not identify any new categories of jobs for them. Once policy level intervention will done at centre or state(policy) level then no problem will arise.
- At the time of grievance redressal camp DRDA provides Indira Awas, Mo Kudia or Job card as per their demand and need.

## **6. Mayurbhanj**

### **Key Points of Discussions:**

- DSWO does not face any type of budgetary constraint. His office looks after all the schemes for welfare of PWDs:
- The government officials should have interest and willingness to work for the welfare of PWDs. Some government officials do not perform their duties effectively. 10% of government officials do not have interest to work for PWDs in the district of Mayurbhanj. Therefore the government officials and political leaders need sensitization, which will make them sensitive towards issues of PWDs.

- In Mayurbhanj district there is lack of awareness among the PWDs regarding various government schemes. That is why the District Social Welfare Office uses leaflets and booklets to create awareness among the beneficiaries.
- Lack of person power at the field level, affects the implementation process in some way or other.
- State Government solely depends on ALIMCO to get aids and appliances. But that organization fails to cater the needs of PWDs in Mayurbhanj district. ALIMCO is not able to supply the aids and appliances on time, which ultimately leads to frustration among the beneficiaries.
- Grievance day has proved to be very successful as the PWDS can get each and every facility when they come to that meeting and register their grievance.
- District Information System (DIS) collects data on how many children with disabilities are there in the district and on the basis of that data Central government allots funds to the district. The only problem with this DIS is; it only covers severe and profound cases. So the children those who have mild and moderate level disability do not get counted in the identification process. Therefore the report of DIS is not a complete source. That is why the budgetary allocation for 2013-14 is not sufficient for the district.
- In past years, there was a provision of Rs. 3000 per child per year but in the current financial year that amount has come down to Rs. 1800 per child per annum. It clearly shows how incorrect information leads to allocation of insufficient funds. But earlier the funds were allotted on the basis of report given by IED Coordinator.
- There is a cordial relation between the administration and the parents of children with disabilities. The BRTs provide orientation on parenting children with disabilities to the parents which has a positive impact on the development of children. The office of District Project Coordinator, SSA also organizes 15 days residential training to parents on how to use Braille.
- Proper identification and enrollment of children with disabilities was possible only because of the Inclusive Education (IE) Volunteers. The BRTs and IE volunteers are also responsible to impart Home Based Education to the children those who have severe

disabilities. But now due to shortage of funds the district cannot afford to have the IE Volunteers and that adds extra burden on BRTs and CRCs.

- The salary of BRTs is also very less. That is one reason why most of the seats are vacant for the post of BRTs. There are 78 seats for the post of BRTs but only 37 are in place. SSA organizes 10 days training program for professionals and Special teachers but that is not enough. They need time to time training in a whole year. But shortage of funds acts as a barrier in this context.
- Lack of resource centers at block level is another factor affecting the implementation process.
- There are five administrative officers for District Disability Rehabilitation Centre, Mayurbhanj. Therefore it leads to various management problems and this directly or indirectly hampers the work efficacy of the officials. The DDRC staffs do not have a definite boss, who can coordinate everything.
- DDRC faces utmost negligence from government side. For example, they have a building but they do not have any one for maintenance of that building. Recently due to Phailin this building requires proper renovation but none of the administrative officers show interest in it.
- There is no such facility or provision for the DDRC staffs that is the main reason why professionals do not want to work in DDRC. The posts of Audiologist, Ear mold technician and MRW are vacant since a long time and because of this vacancy the audiometric test does not take place in DDRC. Still the administration does not bother to fill up these posts.

## **7. Puri**

### **Key points of Discussions:**

- ADSWO deals with Odisha Disability Pension, Banishree Scholarship, Free Uniform for Special School children, SHGs of persons with disabilities and BBSA Camp. In the district, there are four special schools and only one out of those is State Government funded, while rest gets funds from Central Government.

- Persons with disabilities do not get benefits out of IAY and Mo Kudia Yojna only because the influence of various politician. Political parties put pressure on the officials to provide the benefits to people those who are close to them. In this way the needy people have nothing to get benefit out of.
- People with disabilities in Puri district are also not very much aware of the welfare programme available for them. The district officials are putting their efforts to make the beneficiaries aware; still this has no positive consequences.
- When it comes to allotment of funds, the ADSWO was of the view that, budget for Disability Pension is not sufficient for the beneficiaries.
- Shortage of manpower at field level can better be explained by the Field level staff i.e. Social Educational Officer. These SEOs are responsible for implementing various welfare schemes for people with disabilities at the grass root level.
- District Project Coordinator gets the funds directly from Odisha Primary Education Programme Authority. DPC office receives funds from OPEPA for Inclusive Education and an approved list of activities which has to be carried out for the financial year with the total amount received.
- They have two BRPs and three BRTs per block. They are sufficient enough to do the work of IE Volunteers. So there is no need of IE volunteers.
- Due to shortage of funds many effective components such as Exposure visit and Theme based camps have been eliminated for the current financial year. State Government should increase the amount of money per child per year and should provide more funds for Medical treatment of children with disabilities.

## **8. Cuttack**

### **Key Points of Discussions:**

- District officials take necessary action for the development of people with disabilities in the district.
- Budget is not a problem for district administration as they explore funds from different sources and funds utilization is up to mark.

- Lack of staff at field level hampers the implementation and monitoring process. It is impossible in the case of ADSWO to look after all the welfare schemes and plans single handedly. So there is a need to recruit staffs that can assist the ADSWO.
- PWDs are getting benefits during Grievance Redressal Day.

## **Conclusion**

- There are enough funds for welfare activities but underutilization is happening in case of disability.
- Lack of staff to implement various schemes is a constraint in budget utilization.
- District officials are unaware of the various laws on disability. Few senior level officials had heard of PWD Act 1995. But they were not aware of all its details. UNCRPD was a foreign term for all. There was no knowledge of it.
- There is a perspective difference between the officer at the headquarters and those at the district and at the sub district level.
- There is no effort to link other schemes of various departments with PWDs.
- There is no proper monitoring and evaluation mechanism on the functioning of the disability welfare offices at the district level.

## Chapter: 6

### **FOCUS GROUP DISCUSSION WITH PERSONS WITH DISABILITIES**

#### **1. Ganjam**

We conducted a focus group discussion in the district of Ganjam in association with Odisha Bikalanga Mancha (Odisha State Disability Network Partner). There were 15 participants present. Most of them are students, pursuing their higher studies. All of them are persons with locomotor disability. Number of female participants was higher than their male counterparts.

#### ***I. Key Findings:***

- The participants were aware of the schemes such as Madhu Babu Pension Yojna, Banishree Scholarship, Indira Awas Yojna, Mo Kudia, MGNREGA, Bus and Train concession pass, Subsidized Rice and Aids and Appliances.
- The beneficiaries, those who are in grass root level do not get benefit out of these welfare schemes due to complicated government procedures, non-willingness of government officials and lack of awareness about schemes among the people with disabilities.
- But unanimously the participants agreed that Madhu Babu Pension, Banishree Scholarship and Subsidized Rice are the most effective schemes for the welfare of persons with disabilities as far as Ganjam district is concerned. Because these above said schemes are easy to avail and access.
- Allotment of funds towards welfare of PWDs is less in comparison to other welfare schemes of state government. It clearly indicates, government does not give priority to PWDs and their issues.

#### ***II. Summary Analysis:***

People in the grass root level are not much aware of budgetary allocation or its expenditure, what matters to them is, are they getting the benefits or not? Now PWDs are becoming conscious about at least what are the benefits is meant for them. Madhu Babu Pension Yojna is the most successful schemes under DSWOs office. If government will allot more funds for the welfare of PWDs and the officials have to be more sensitive towards the cause then the scheme will reach at same volume to the PWDs.

## **2. Sundargarh**

In Sundargarh, with the support of Shraddha (OSDN Partner) we had a focus group discussion, where 20 participants from different parts of the district participated. In this group we had parents of children with mental retardation and Autism, PWDs those who are service holders and PWDs those who are job seekers. Here the number of male member was higher than the female participants and they were more active in comparison to the female members.

### ***I. Key findings:***

- Most of the participants were aware of the Madhu Babu Pension Scheme, Railway concession pass, Subsidized Rice and Indira Awas Yojna.
- The participants were of the view that government does not pay attention to the needs of PWDs.
- The government is not making enough efforts to publicize its schemes for welfare of PWDs that is one of the reasons why beneficiaries do not know about the schemes.
- Corruption is the major obstacle for PWDs in getting benefit out of the government schemes.
- Complicated procedures in availing the schemes are another obstacle in front of beneficiaries which leads to frustration among the PWDs.
- Insensitiveness and lack of willingness of Government officials directly or indirectly harass the PWDs those who intend to avail welfare schemes.
- State Government does not prioritize the needs and rights of PWDs. That is why government allots fewer funds for disability welfare in comparison to other welfare programmes.
- PWDs need to be united in order to get their rights in society.

### ***II. Summary Analysis:***

PWDs need special attention at the same time an equal level playing ground to show their talent and expertise. The officials in charge of the development of PWDs have to be more coherent and sensitive in all manner right from full utilization of funds to hassle free service delivery. We found from the discussion that funds for the welfare of PWDs is always scanty as comparison to its need, so it gives rise to societal imbalance and persons with disabilities fill pity of themselves.

Government should take action in appointment of more dedicated professional staffs at the district and block level to implement and monitor the welfare projects.

### **3. Kendrapara**

We conducted a focus group discussion with 13 people with disabilities at Kendrapara with the support of Punarbasa, our OSDN partner. The group consisted of parents of children with disabilities and people with locomotor disabilities. We had a very few female participants and they were not very active in the discussion.

#### ***I. Key findings:***

- The participants were aware about Madhu Babu Pension, Bus concession, Banishree scholarship, Mo Kudia, IAY and subsidized rice.
- Most of the participants were not aware about MGNREGA, NHFDC Loan, subsidized rice, escort allowance schemes.
- There is a need of mechanism to publicize the welfare schemes.
- The candidates do not even have interest and patience to know about the schemes.
- In their view point Madhu Babu Pension Yojna, Banishree Scholarship and Subsidized rice are the effective schemes of the Govt.
- District Officials cannot even spend the sanctioned budget for welfare of people with disabilities. It clearly shows the negligence of government officers towards people with disabilities.

#### ***II. Summary Analysis:***

Success of the schemes depends on equal responsibility from both officials and PWDs. In the case of Kendrapara district we saw a different scenario. Here political affiliation determines the eligibility of a beneficiary. Officials are callous with having deaf ear towards the issues. People are not getting benefits in other side funds are remaining unutilized. PWDs are unaware about most of the welfare schemes.

## **4. Koraput**

With the support of EKTA (OSDN Partner) we conducted a focus group discussion with 8 PWDs in the district of Koraput (Koraput having an inaccessible terrain, it was difficult for PWDs to come to attend the FGD). Except one person with visual impairment, the others are people with locomotor disability. Some had their small business and some were searching for jobs. The male participants were more active in comparison to their female counterparts.

### ***I. Key Findings:***

- The participants were well aware of Bus concession pass, Railway concession pass, Disability pension, Disability Certificate, Subsidized rice, Bhima Bhoi Samarthya Sibira, MGNREGA, and Indira AwasYojna.
- Political influence, lack of willingness of doctors and officials, insensitiveness of government officials and lack of awareness among the PWDs are the major reasons of ineffectiveness of welfare schemes.
- Bribe and corruption still exist in the system and PWDs are victim of it. Government should check the corruption
- The government officials those who are in lower rank; they harass PWDs the most.
- Budget for welfare of PWDs is less as compare to other welfare programmes because government considers them unproductive members of society.
- Government should provide orientation to the government officials, so that they can be sensitive towards PWDs.
- Government should give priority to PWDs and their issues.
- There is a need to organize more and more awareness campaigns in order to make the PWDs, those who live in the interior part of the district.

### ***II. Summary Analysis:***

Corruption, political influences and scanty funds allotments are untidily pushing back the welfare schemes of PWDs. In Koraput PWDs are being harassed by lower level staffs. PWDs are much aware about the schemes; which are meant for them but due to shortage of funds and unwillingness of government staffs PWDs are not getting benefit out of that, further insufficient and untrained staffs in the district level are the main blocks in the path of PWDs progress.

## **5. Mayurbhanj**

We conducted a focus group discussion with 12 participants in the district of Mayurbhanj with the support of UNAYAN (OSDN Partner). We had a mix group of people having visual impairment, hearing impairment, mental retardation and locomotor disability. Most of them were engaged in livelihood activities. Some of them are having their own variety store, tailoring shop, betel shop and grocery shop and others were the part of Self Help Group. The female members were as active as the male participants.

### ***I. Key Findings:***

- The participants were aware of Odisha Disability Pension, Subsidized Rice, Bus concession pass, and Train concession pass, Indira Awas Yojna, Mo Kudia, BBSA Camp and MGNREGA.
- The government and representatives of government harass the PWDs at various levels. PWDs have to face humiliation in public places for bus pass and train pass.
- Government makes laws but it does not show utmost sincerity and interest to execute those laws. Every law every resolution remains in the paper and the needy people do not get benefit out of it.
- They held the view that government does not give importance to PWDs that is why the budgetary allocation of disability welfare is less in comparison to other welfare schemes.
- There are some lacunae from the sides of beneficiaries too. For example family members often do not reveal that they have a PWD in the family and they do not even support the PWD to avail welfare schemes. Sometime the PWDs themselves do not take interest to know about their rights and therefore they remain unaware of various welfare schemes meant for them.
- The government needs to work hard for creating awareness among the PWDs regarding the welfare schemes.
- The procedures for availing schemes should be simplified and priority should be given to Single window camp, where at one place PWDs can get each and every facilities.
- The government should increase the budgetary allocation for disability welfare so that all the PWDs can get the benefit out of government schemes.

- The PWDs should come together to fight for their rights. If they would not take initiative to know about their rights then government efforts to make people with disabilities empower will have no results.

## ***II. Summary Analysis:***

Support and opportunities can change the face of any mass. Here PWDs are far ahead than other districts. They are self employed but government is not providing any hand holding or support. Meager funds allocation and un-utilization of funds are the main bottlenecks in the development of PWDs. PWDs should form their pressure group to get their rights.

## **6. Cuttack**

With the support of SAHAYA (OSDN Partner) we conducted one focus group discussion in the district of Cuttack. A total number of 19 participants were present in the discussion. There were in total 9 persons with disability. Out of which 7 were having locomotor disability, 1 was mentally challenged and 1 suffered from multiple disability. Others were parents of children with disabilities.

### ***I. Key Findings:***

- Many of the participants hadn't even heard the names of the schemes before. PWDs those who belonged to a rich family and did not had to bother about their rights, on the other hand people were so poor that they felt frustrated and were desperate to know their rights.
- Difficulties faced by PWDs are in the complicated procedures defined. They also complained of getting wrong percentage of disability. Doctors do not pay attention to mental retardation. They also remain absent on most of the occasion making the PWDs wait for long hours and keep them running from one office to another, which may be tolerable for normal people but it becomes very tedious for PWDs. It also manifests in the lack of sensitivity on the part of the official.
- Getting a job in private sector doesn't seem easy. Even in the government sector the reservation policy seems only to be in pen and paper.
- Complicated procedures do not allow the PWDs to avail various welfare schemes. So these procedures need to be simplified.

- In case of education which is the greatest tool for the empowerment of PWDs, a lack of attention towards the higher studies was pointed out. PWDs said mere attention to scholarship is not enough, though it's very important.
- Poor quality of aids and appliances distributed in the Bhima Bhoi Smarthya Sibira was pointed out. The participants couldn't get any benefit from the last Sibira, held in 2013 because the camp was over crowded. So these sibiras should be conducted simultaneously in various clusters to avoid such kind of problems.
- The Government needs to set up a Disability Information System so that people would be able to know the methods to get the benefit of even the few schemes they knew. There is a need of Disability Helpline Number in the State.
- Lack of utilization of funds results in less funds allocation for welfare of PWDs in comparison to other welfare programmes.

## ***II. Summary Analysis:***

Information is the greatest tool for everyone. PWDs are the most isolated as they don't have the sufficient information regarding their rights. In the name of welfare; government is doing charity. PWDs have been provided poor quality of aids and appliances. Government is taking advantage of PWDs helplessness and unawareness. Non availability of trained and experienced professionals is leading towards very substandard service delivery which further adds tear and frustration for PWDs. Shortage of funds and unwillingness for providing service to the stakeholders are the main bottlenecks in the development of PWDs.

## **7. Khordha**

We conducted a focus group discussion with people with disabilities in the district of Khordha with the support of RUDSET. There were 16 participants present. This group was consisted of 14 female members and 2 male members. Only one participant had visual impairment and others had locomotor disability. Most of the participants had one or other source of income. Some of them are tutors, whereas others are self employed.

### ***I. Key Findings:***

- Most of the participants were well aware of bus pass, train pass, disability pension, subsidized rice, IAY, Mo Kudia, Scholarships schemes. But many of them did not know how to avail the schemes.

- When it came to getting benefits out of the welfare programmes, the participants unanimously admitted that those schemes were not reaching out to the real needy beneficiaries. They also agreed to the fact that PWDs themselves are not very proactive to know about the welfare schemes meant for them.
- PWDs do not bother about their rights. They do not even want to fight for it. That is why disability issues do not get proper representation in the state.
- The participants were of the view that state government has sufficient funds to allot for welfare programmes for PWDs. But only because of corruption by the officials those who are in the lower rank, PWDs do not get benefits out of the welfare schemes.
- There is no proper utilization of allotted funds towards disability welfare programmes. That may be another reason why state government does not allot more funds for welfare of PWDs.
- There is no separate department to deal with the issues of PWDs that is another reason for which PWDs do not get priority when government talks about development of society.
- The amount of Odisha Disability Pension needs to be increased because Rs 300 is not sufficient for the people with disabilities those who do not have any other source of income.
- Government does not make enough efforts to publicize the schemes and programmes meant for PWDs. The government officials do not have interest to work for people with disabilities.

## ***II. Summary Analysis:***

In order to avail the welfare schemes an individual with disability needs to get information on the same. Those who had somehow managed to get higher education; they were the ones who were actually interested in knowing about their rights. On the other hand PWDs those who had not had the opportunity to complete their primary education; they are more likely to dependent on disability pension provided by State Government. They demanded that the amount of pension should be more so that one PWD can sustain his or her life. Complicated procedures and negative mindset of government officials are two major factors for which people with disabilities do not get benefit out of the welfare programmes.

## Chapter: 7

### DISTRICT BUDGETING

#### 1. Khurdha

##### Information from ADWSO

Sl.No	Name of the scheme	Financial Achievement	Physical Achievement
1.	Odisha Disability Pension		15,000
2.	Banishree	18,00,000	633
3.	Scholarship for children of persons with disabilities for pursuing Higher Education	49,500	42
4.	Special School		1500
5.	DRI Loan		80 (Application Received)

##### Transfer of Funds from Directorate to DSWO in the year 2013-14

Sl.No	Activities	Amount
1	Special School	2,38,89,855
2	Scholarship	34,96,000
3	Celebration of International Day for PWDs	25,000
4	ADIP	2,00,000
5	VTC	4,83,120
6	Surgery	1,00,000
7	Uniform	76,000
8	Care and Protection	20,000
9	Marriage Incentive	1,50,000
10	R/PRPD	2,16,200
11	M/ PRPD	1,83,300
	<b>Total</b>	

**Details of BBSA Camp List of persons with disabilities registered:**

<b>Category of PwDs</b>						
<b>Locomotor</b>	<b>Speech and Hearing</b>	<b>Visual Impairment</b>	<b>Mental retardation</b>	<b>Cerebral Palsy</b>	<b>Autism</b>	<b>Multiple Disability</b>
7056	3171	2125	2295	294	38	220

**No. of Beneficiaries in each of the activities:**

<b>Sl.No</b>	<b>Activities</b>	<b>No. of Beneficiaries</b>
1	No. of sibirs conducted	22
2	No. of cases registered	15199
3	Disability certificate issued	6685
4	Income certificate issued	1744
5	Residence certificate issued	0
6	Bus Pass	2696
7	Rail Pass	380
8	Identity Card issued	156
9	Passbook issued	156
10	ODP application issued	0
11	IAY application received	0
12	DRI Loan Appl. Recd.	167
13	Registered for surgery	0





	engaged	0	0	0	0	26	3.5	82	12.1	75	18.19	68	23	66	5.82
23	Exposure visit	0	0	22	2.64	11	1.54	30	6	20	5	32	6.6	0	0
24	No. of CWSN provided Escort allowance	0	0	160	1.19	300	6	300	6	400	12	671	20.2	650	0
25	District budgetary allocation on IE	0	38.91	0	44.74	0	55.73	0	149.87	0	148.73	0	147.8	0	72.29

### Poverty Alleviation Schemes:

#### Financial Achievement under Indira Awas Yojna

Year	Allocation	Expenditure
2009-10	3515.632	2548.234
2010-11	4705.72	5189.99
2011-12	2704.12	3056.67
2012-13	2935.87	3696.05

#### Physical Achievement under Indira Awas Yojna

Year	Total		PH	
	Target	Achievement	Target	Achievement
2008-09	5955	5955	176	176
2009-10	9263	9124	269	59
2010-11	11,591	10,062	347	Nil
2011-12	8185	8943	234	602
2012-13	8624	9395	259	345
<b>Total</b>	<b>43,618</b>	<b>43,479</b>	<b>1285</b>	<b>1182</b>

(Source: Coordinator IAY)

### Mo Kudia

DRDA has no information regarding total beneficiaries and beneficiaries with disabilities under Mo Kudia Scheme. The Block Development Officers are responsible for this particular scheme so all the information related to the scheme is available with the BDOs.

**Financial Achievement under Mo Kudia***(Rs. in Lakhs)*

<b>Year</b>	<b>Allocation</b>	<b>Expenditure</b>
2009-10	231.00	231.000
2010-11	284.40	284.400
2011-12	284.40	284.400
2012-13	386.55	386.550

**Financial Achievement under MGNREGS**

<b>Year</b>	<b>Allocation</b>	<b>Expenditure</b>
2009-10	538.89	427.67
2010-11	1429.34	1287.17
2011-12	1488.89	1068.57
2012-13	777.38	1572.66

**Financial Achievement under SGSY**

<b>Year</b>	<b>Allocation</b>	<b>Expenditure</b>
2009-10	520.19	515.402
2010-11	506.09	511.515
2011-12	519.96	574.19

**Physical Achievement under SGSY**

<b>Year</b>	<b>Total Beneficiaries</b>	<b>Disabled Beneficiaries</b>
2009-10	3795	465
2010-11	4237	170
2011-12	3903	148

## 2. Ganjam

### Ganjam District Information –From office of the DSWOs

Sl no	Schemes	Year		Beneficiary Covered
		2012-13	2013-14	
1	ODP		9,14,14,800	25393
2	IGNDP		1 corer 51 thousand	4920
3	Banishree	25,85,000	44,70,000	
4	Subsidized Rice			9978
5	Mission Khyamata	75.0000	3,00,000	
6	NHFDC	1,90,000		3
7	DRI Loan		6,60,000	44 (15thousand per beneficiary )
8	BBSA Camp			
10	Scholarship children of PWDs	238000	2,38,000	68
11	Free uniform	243600		

### Transfer of Funds from Directorate to DSWO in the year 2013-14

Sl.No	Activities	Amount
1	Special School	95,22,849
2	Scholarship	44,70,000
3	Celebration of International Day for PWDs	29,000
4	Care and Protection	20,000
5	Marriage Incentive	1,50,000
	<b>Total</b>	<b>1,41,91,849</b>

## BBSA Camp Details

### List of Persons with disabilities registered:

Category of PwDs						
Locomotor	Speech and Hearing	Visual Impairment	Mental retardation	Cerebral Palsy	Autism	Multiple Disability
11314	3120	3739	3307	0	0	0

### No. of Beneficiaries in each of the activities in 46 sibirs:

Sl.No	Activities	No. of Beneficiaries
1	No. of cases registered	21480
2	Disability certificate issued	17155
3	Income cert. issued	6080
4	Residence cert. issued	5584
5	Bus pass	6339
6	Rail pass	6120
7	Identity Card issued	440
8	Pass book issued	0
9	ODP application issued	0
10	IAY application received	0
11	DRI Loan Appl. Recd.	1186
12	Registered for surgery	0

**List of children with disabilities in the district:**

Sl.No	Year	CWSN Identified
1	2009-10	8819
2	2010-11	4487
3	2011-12	4868
4	2012-13	4207
5	2013-14	4735

**Budget allocation and expenditure on Inclusive Education**

Sl.No	Activities	2007-08	2008-09	2009-10	2010-11	2011-12	2012-13
1	Budget Sanctioned	149.4	76.08	91.32	296.82	280.89	265.80
2	Expenditure	97.49	58.56	92.84	297.59	252.55	276.17

**Poverty Alleviation Schemes:****Financial and Physical Achievement under IAY**

Financial Year	Budgetary Allocation (Rs. in Lakhs)	Expenditure (Rs. in Lakhs)	Total Beneficiaries	Disabled Beneficiaries
2009-10	7673.26	7421.95	19593	588
2010-11	4764.02	4576.41	12097	361
2011-12	5331.68	5144.51	11816	344
2012-13	6779.73	6272.50	12634	379

### Financial and Physical Achievement under Mo Kudia

<b>Financial Year</b>	<b>Budgetary Allocation (Rs. in Lakhs)</b>	<b>Expenditure (Rs. in Lakhs)</b>	<b>Total Beneficiaries</b>	<b>Disabled Beneficiaries</b>
2009-10	350.00	322.97	1000	30
2010-11	652.50	227.37	950	18
2011-12	630.00	441.87	900	26
2012-13	635.83		1311	39

### Financial and Physical Achievement under SGSY

<b>Financial Year</b>	<b>Budgetary Allocation (Rs. in Lakhs)</b>	<b>Expenditure (Rs. in Lakhs)</b>	<b>Total Beneficiaries</b>	<b>Disabled Beneficiaries</b>
2009-10	1177.97	1023.72	8746	268
2010-11	1264.21	1276.75	10140	181
2011-12	1589.04	1579.45	8177	277

### 3. Sundargarh

#### Different schemes for persons with disabilities

Sl No	Schemes	Year		Beneficiary Covered
		2012-13	2013-14	
1	ODP			8388
2	IGNDP			3285 State-90754
3	Banishree		2572650	1176
4	Subsidized Rice			2669
5	Mission Khyamata	60,000		13
6	NHFDC	1287350		20
7	DRI Loan	55000		10
8	Scholarship children of PWDs		73500	21

#### Transfer of Funds from Directorate to DSWO in the year 2013-14

Sl.No	Activities	Amount
1	Special School	42,94,928
2	Celebration of International Day for PWDs	28,000
3	Care Protection	20,000
4	Marriage Incentive	1,00,000
	<b>Total</b>	<b>44,429,28</b>

## BBSA Camp Details

### List of persons with disabilities registered:

Category of PwDs						
Locomotor	Speech and Hearing	Visual Impairment	Mental retardation	Cerebral Palsy	Autism	Multiple Disability
4253	2262	1465	1645	54	1	73

### Total no. of beneficiaries in each of the activities in 38 sibirs:

Sl.No	Activities	No. of Beneficiaries
1	No. of cases registered	9753
2	Disability certificate issued	6686
3	Income cert. issued	3047
4	Residence cert. issued	1453
5	Bus pass	6467
6	Rail pass	3738
7	Identity Card issued	6385
8	Pass book issued	0
9	ODP application issued	935
10	IAY application received	0
11	DRI Loan Appl. Recd.	32
12	Registered for surgery	0

**Total number of children with disabilities identified in the district**

<b>Year</b>	<b>CWSN Identified</b>
2009-10	8819
2010-11	4487
2011-12	4868
2012-13	4207
2013-14	4735

**Budget allocation and expenditure on Inclusive Education**

<b>Sl.No</b>	<b>Activities</b>	<b>2008-09</b>	<b>2009-10</b>	<b>2010-11</b>	<b>2011-12</b>	<b>2012-13</b>
1	Budget Sanctioned	118.7	118.7	134.61	146.1	117.79
2	Expenditure	80.58	95.63	110.62	127.18	117.90

**Poverty Alleviation Schemes****Financial and Physical Achievement under MGNREGS:**

<b>Year</b>	<b>Allocation</b>			<b>Total Expenditure</b>	<b>Disabled Beneficiaries</b>
	<b>Central</b>	<b>State</b>	<b>Total</b>		
2008-09	2778.60	2778.60	5557.20	2889.95	No data
2009-10	5760.00	5760.00	11520.00	5823.76	No data
2010-11	6380.00	6380.00	12760.00	7523.59	47
2011-12	3750.00	550.00	4300.00	3732.24	95
2012-13	4640.00	3425.00	8065.00	6240.83	108

**Financial and Physical Achievement under Mo Kudia:**

<b>Year</b>	<b>Total Allocation</b>	<b>Total Expenditure</b>	<b>Total Beneficiaries</b>	<b>Disabled Beneficiaries</b>
2009-10	131.25	131.25	375	21
2010-11	162.45	162.45	361	30
2011-12	1425.95	1425.95	361	0
2012-13	368.114	368.114	759	0

**Financial and Physical Achievement under IAY:**

<b>Year</b>	<b>Total Allocation</b>	<b>Total Expenditure</b>	<b>Total Beneficiaries</b>	<b>Disabled Beneficiaries</b>
2009-10	1785.44	271,543,836	5101	166
2010-11	2041.173	176,908,108	4536	130
2011-12	1132.68	28,44,48,938	4111	5
2012-13	2209.2	202,754,441	4555	30

**Financial and Physical Achievement under SGSY:**

<b>Year</b>	<b>Total Allocation</b>	<b>Total Expenditure</b>	<b>Total Beneficiaries</b>	<b>Disabled Beneficiaries</b>
2009-10	69458000	62519124	4267	129
2010-11	54117100	86003988	4229	125
2011-12	98372300	78709428	5085	05

*This scheme of SGSY has been closed on 31<sup>st</sup> March, 2012.*

#### 4. Kendrapara

##### Transfer of Funds from Directorate to DSWO in the year 2013-14

Sl.No	Activities	Amount
1	Special School	23,85,071
2	Celebration of International Day for PWDs	25,000
3	Care Protection	15,000
4	Marriage Incentive	50,000
	<b>Total</b>	<b>24,750,71</b>

##### BBSA Camp Details

##### List of Persons with disabilities registered:

Category of PwDs						
Locomotor	Speech and Hearing	Visual Impairment	Mental retardation	Cerebral Palsy	Autism	Multiple Disability
3100	685	1523	1055	418	0	0

##### Beneficiaries in each of the activities (18 sibirs):

Sl.No	Activities	No. of Beneficiaries
1	No. of cases registered	6781
2	Disability certificate issued	6781
3	Income cert. issued	6781
4	Residence cert. issued	6781
5	Bus pass	6781
6	Rail pass	0
7	Identity Card issued	6781

8	Pass book issued	0
9	ODP application issued	283
10	IAY application received	0
11	DRI Loan Appl. Recd.	0
12	Registered for surgery	0

**Year wise no. of children with disabilities enrolled under Inclusive programme:**

<b>Year</b>	<b>Enrolled</b>
2007-08	3003
2008-09	4046
2009-10	3558
2010-11	3961
2011-12	4080
2012-13	3908
2013-14	3902

**Year wise allocation and expenditure under IE programme (amount in Lakh)**

<b>Sl. No</b>	<b>Activities</b>	<b>2007-08</b>	<b>2008-09</b>	<b>2009-10</b>	<b>2010-11</b>	<b>2011-12</b>	<b>2012-13</b>
1	District budget on IE	38.90	41.02	43.21	121.05	123.84	110.66
2	Funds utilized on IE	26.82	38.41	39.75	85.92	73.58	94.67

**Poverty Alleviation Schemes:**

**Financial Achievement under MGNREGS:**

<b>Year</b>	<b>Total Allocation</b>	<b>Total Expenditure</b>
2009-10	538.89	752.21424
2010-11	5166.66	3950.49352
2011-12	2600.00	2253.82
2012-13	300.00	1822.81

**Financial Achievement under Mo Kudia**

*(In Lakhs)*

<b>Year</b>	<b>Total Allocation</b>	<b>Total Expenditure</b>
2009-10	112.35	129.70
2010-11	138.15	157.59
2011-12	138.15	123.07
2012-13	130.95	346.25

**Financial Achievement under IAY**

*(In Lakhs)*

<b>Year</b>	<b>Total Allocation</b>	<b>Total Expenditure</b>
2009-10	2056.154	4594.52
2010-11	1672.464	2542.95
2011-12	1411.582	1421.82
2012-13	1971.391	2020.00

**Financial Achievement under SGSY:**

*(In Lakhs)*

<b>Year</b>	<b>Total Expenditure</b>
2009-10	453.57
2010-11	451.84
2011-12	430.60

*This scheme of SGSY has been closed on 31<sup>st</sup> March, 2012.*

**MGNREGA- Physical and Financial Progress up to end of March 2012 and 2012-13 (up to Nov. 2012)**

<b>Financial Position (Rs. in lakhs)</b>	<b>2011-12</b>	<b>2012-13</b>
Opening Balance	1208.61	1556.06
Funds Received	2340.00	2000.00
Central	260.00	0.00
State	2600.00	2000.00
Total Funds available	3808.61	1755.06
Expenditure	2253.55	878.93
% of Expenditure	59	50

(District Website: [www.kendrapara.nic.in](http://www.kendrapara.nic.in))

**INDIRA AWAS YOJANA**

**Financial Position (Rs. in Lakh)**

<b>Allocation</b>	<b>2011-12</b>	<b>2012-13</b>
Central Share	1276.98	1414.90
State Share	425.66	471.63
<b>Total</b>	<b>170264</b>	<b>1886.53</b>

<b>Funds Received</b>	<b>2011-12</b>	<b>2012-13</b>
OB as on 1 <sup>st</sup> April	347.19	254.22
Central Share	876.18	707.45
State Share	452.66	232.48
<b>Total Received</b>	<b>1328.84</b>	<b>939.73</b>

(District Website: [www.kendrapara.nic.in](http://www.kendrapara.nic.in))

<b>Financial Years</b>	<b>Total Funds Available</b>	<b>Expenditure Incurred</b>	<b>% of Expenditure</b>
2011-12	1676.303	1421.82	82
2012-13	1193.95	859.69	72

(District Website: [www.kendrapara.nic.in](http://www.kendrapara.nic.in))

## MO KUDIA

### Physical and Financial Progress in 2012-13:

S.N	Name of the block	Physical			Financial (In Lakhs.)		
		Total Houses	Total Houses Taken Up	Completed	Total Funds	Expenditure (Cumulative)	% of Expenditure
1	Kendrapara	65	21	25	28.565	7.3	26
2	Derabish	61	43	22	24.195	11.1	46
3	Marsaghai	54	0	35	24.2	6.3	26
4	Pattamundai	70	0	36	54.62	16.2	30
5	Mohakalpada	91	25	19	36.435	5.5	15
6	Rajnagar	69	26	33	58.725	7.55	13
7	Rajkanika	60	34	30	49.1	3.1	6
8	Aul	65	10	15	30.275	7.1	23
9	Garadpur	47	37	5	17.325	8.14	47
	<b>Total</b>	<b>582</b>	<b>196</b>	<b>220</b>	<b>323.44</b>	<b>72.29</b>	<b>22</b>

(District Website: [www.kendrapara.nic.in](http://www.kendrapara.nic.in))

## 5. Koraput

### Details of beneficiaries under various schemes in Koraput

Sl. No	Name Of The Scheme	No of Beneficiaries
1.	Disability Certificate(as per the record)	9880
2.	Income Certificate	713
3.	Bus /Train Concession	3921
4.	Bank pass book	4229
5.	IAY	712
6.	DRI loan	16
7.	Banishree Scholarship	976

8.	Mission Khyamata	20
9.	Pension	9645

**Transfer of Funds from Directorate to DSWO in the year 2013-14**

Sl.No	Activities	Amount
1	Special School	67,534,57
2	Scholarship	23,00,000
3	Celebration of International Day for PWDs	25,000
4	Care Protection	15,000
5	Marriage Incentive	50,000
	<b>Total</b>	<b>91,43,457</b>

**BBSA Camp Details**

**List of Persons with disabilities registered:**

Category of PwDs						
Locomotor	Speech and Hearing	Visual Impairment	Mental retardation	Cerebral Palsy	Autism	Multiple Disability
4350	2553	1766	1301	0	0	0

**Beneficiaries in each of the activities (18 sibirs):**

Sl.No	Activities	No. of Beneficiaries
1	No. of cases registered	9970
2	Disability certificate issued	4189
3	Income cert. issued	713
4	Residence cert. issued	283

5	Bus pass	3921
6	Rail pass	896
7	Identity Card issued	4270
8	Pass book issued	4229
9	ODP application issued	1348
10	IAY application received	712
11	DRI Loan Appl. Recd.	399
12	Registered for surgery	13

**Year wise no. of children with disabilities enrolled under Inclusive programme:**

<b>Year</b>	<b>Enrolled</b>
2007-08	3741
2008-09	4409
2009-10	4372
2010-11	4301
2011-12	4976
2012-13	4630
2013-14	1233

**Year wise allocation and expenditure under IE programme**

<b>Sl. No</b>	<b>Activities</b>	<b>2007-08</b>	<b>2008-09</b>	<b>2009-10</b>	<b>2010-11</b>	<b>2011-12</b>	<b>2012-13</b>
1	District budget on IE	12.67	58.46	61.63	137.73	160.95	135.41
2	Funds utilized on IE	10.30	40.36	54.04	119.04	138.26	80.54

## Strategies and intervention for the year 2010-11

SI No	Activity	Physical	Financial
1	Medical Assessment camps	14	4.20
2	Provision of aids and appliances	633	10.70
3	Resource Teachers' salary	7	7.14
4	New BRTs salary	35	18.20
5	Honorarium to volunteers	118	14.16
6	Sports meet for CWSN (Dist and Block level)	15	1.50
7	Construction of ramps	250	17.50
8	Toilet modification	42	16.80
9	2-days teachers training	2240	4.48
10	Theme based camps	70	6.30
11	Physio therapy camps	2	0.40
12	Speech Therapy Camps	42	4.20
13	Pre-Vocational training	42	0.42
14	Escort allowance	280	5.60
15	Exposure visit for CWSN	14	2.80
16	Braille Books	65	0.46
17	Braille kits for VIC	65	0.65
18	Learning kits for MR/HIC	185	1.85
19	RCI Training	40	2.00
20	Surgical correction	52	1.00
21	Parent counseling	2000	2.00
22	Printing of leaflets /posters etc	3000	0.99
23	Books and Stationary expenses	0	0
24	International day for persons with disabilities	15	0.75
25	Anjali Camps	1	0.20
26	Home based education	290	0
27	Contingency to BRC on IE	14	1.40
28	Workshops / meetings at district level	2	0.50
29	15 days induction training to IE Volunteers	118	3.54
30	Hiring charges for speech and physio therapist	14	3.36
31	Survey and identification	14	2.80
32	10 days multi category training to BRT	42	0.84
33	Review meeting of volunteers	118	1.00
			<b>137.74</b>

**Activity wise plan for Inclusive Education for 2011-12**

<b>Sl.No</b>	<b>Activity</b>	<b>Physical</b>	<b>Financial</b>
1	Salary and FTA @ 9,500 per month for 12 months to BRTs engaged in 2006	6	6.84
2	Salary and FTA @ 8,000 per month for 12 months to newly engaged BRTs in 2010-11	36	34.56
3	Honorarium to IE Volunteers @ 2,500 for 10 months engaged in 2010-11	118	35.40
			<b>76.80</b>
4	5 days training to IE Volunteer	118	1.41
5	10 Days residential multi category training to BRTs	42	0.84
6	Performance study of CWSN through QMT: data collection, sharing and parents' meeting	14	2.80
7	Bi monthly meeting/ review/sharing of BRT/Volunteers at dist level	12	0.80
8	Block level medical assessment camp	14	3.50
9	Procurement & distribution of assistive devices to CWSN including Braille kit for blind, special / corner chair for CP, ear mould for HI	300	6.00
10	Construction of ramps with handrails	42	3.36
11	Construction of barrier free toilets	84	16.80
12	3 days speech therapy training to children with hearing impairment	36	3.60
13	Theme based programme	36	3.60
14	5 days physiotherapy camp	4	0.80
15	Peer sensitization camp/ Braille training camp / pre-vocational training camp/ skill development camp for CWSN	28	5.60
16	Provision of surgical correction for CWSN	50	1.00
17	Observation of International Day for the persons with disabilities at block level	15	
18	Construction of resource centers on IE at district level	1	9.20
19	Construction of resource centers on IE at block level	14	
20	2 days training of parents of CWSN	2000	4.00
21	Sports and Cultural meet for CWSN at block level	14	2.80
22	District level sports and cultural meet for CWSN / Disabled day, awards for CWSN, IEV , BRTs	14	
23	Monitoring and supervision of IE activities by SRG/DRG members	1	

24	Printing of booklet/newsletter/ posters/leaflets/brochures/ handbook for teacher and parents	2000	1.00
25	Exposure visit of BRTs/IE Coordinators to other district/state/institutions	14	7.00
26	Exposure visit of CWSNs	14	5.60
27	Supply of Braille books and large print materials for VI children	66	
28	Escort allowance to severe OI/CP/Blind students	100	3.00
29	Workshop / meeting/ orientation/ DRG/BRG training of IE at district level	2	1.00
30	5 days teachers training to regular teachers	2240	
31	Foundation course for teachers/ BRTs/IE coordinator	40	
32	Special training /BRC for out of school children		
33	Research study on different issues on IE		
	<b>Activity total</b>		<b>83.71</b>
	<b>Grand total</b>		<b>160.51</b>

#### Activity wise plan for Inclusive Education for 2012-13

Sl. No	Activity	Physical	Financial
1	2 days training of parents of CWSN	2000	4.00
2	3 days speech therapy training to children with hearing impairment	36	3.60
3	5 days physiotherapy camp	4	0.80
4	5 Days residential multi category training to BRTs	42	0.42
5	5 days teachers training to regular teachers	2240	
6	5 days training to IE Volunteer	118	0.60
7	Bi monthly meeting/ review/sharing of BRT/Volunteers at dist level	12	1.60
8	Block level medical assessment camp	14	3.50
9	Construction of barrier free toilets	84	30.00
10	Construction of ramps with handrails	42	8.00
11	Construction of resource centers on IE at block level	4	20
12	Contingency to BRTs	22	2.20
13	Contingency to IEVs	118	5.90
14	District level sports and cultural meet for CWSN / Disabled day, awards for CWSN, IEV , BRTs	14	2
15	Escort allowance to severe OI/CP/Blind students	100	2.00

16	Exposure visit of BRTs/IE Coordinators to other district/state/institutions	14	7.00
17	Exposure visit of CWSNs	14	5.60
18	Foundation course for teachers/ BRTs/IE coordinator	154	
19	Honorarium to IE Volunteers @ 2,500 for 10 months engaged in 2010-11	118	35.40
20	Monitoring and supervision of IE activities by SRG/DRG members	1	80
21	Observation of International Day for the persons with disabilities at block level	15	1.40
22	Peer sensitization camp/ Braille training camp / pre-vocational training camp/ skill development camp for CWSN	28	5.60
23	Performance study of CWSN through QMT: data collection, sharing and parents' meeting	14	2.80
24	Printing of booklet/newsletter/ posters/leaflets/brochures/ handbook for teacher and parents	2000	
25	Procurement & distribution of assistive devices to CWSN including Braille kit for blind, special / corner chair for CP, ear mould for HI	300	6.00
26	Provision of resource materials/equipment for resource centre	14	7.00
27	Provision of surgical correction for CWSN	50	1.00
28	Research study on different issues on IE		
29	Salary and FTA @ 8,000 per month for 12 months to newly engaged BRTs in 2010-11	36	34.56
30	Salary and FTA @ 9,500 per month for 12 months to BRTs engaged in 2006	6	6.84
31	Special training /RBC for out of school children		
32	Sports and Cultural meet for CWSN at block level	14	0.70
33	Supply of Braille books and large print materials for VI children	66	
34	Theme based programme	36	3.60
	<b>Total</b>		<b>76.80</b>
35	Workshop / meeting/ orientation/ DRG/BRG training of IE at district level	2	2.40
	<b>Total Sanctioned</b>		<b>165.25</b>

**No. of Beneficiaries in Social Security Schemes:**

S. N	Name of the Scheme	2007-08		2008-09		2009-10		2010-11		2011-12		2012-13	
		Total beneficiary	Disabled	Total beneficiary	Disabled	Total beneficiary	Disabled	Total beneficiary	Disabled	Total beneficiary	Disabled	Total beneficiary	Disabled
1	MGNREGA	0	0	0	0	0	0	0	0	0	0	0	0
2	Mo- Kudia	0	0	611	18	1320	40	1581	47	400	12	489	14
3	IAY	2890	87	2890	86	3772	113	5558	166	3505	105	4039	121
4	SGSY	4212	126	5416	162	6414	192	7220	216	6101	183	3600	108

**Total number of disabled beneficiaries in Koraput block of the district**

Year	No. of PWDs received IAY	No. of PWDs received Mo Kudia
2008-09	03	--
2009-10	01	--
2010-11	01	01
2011-12	10	01
2012-13	06	04
<b>Total</b>	<b>21</b>	<b>06</b>

From the above table it is clear that, the number of people with disabilities who got benefits under IAY and Mo Kudia is very less. IAY is a well known scheme of Central Government. Still the people with disabilities do not get adequate benefits out of this scheme. There were only three people with disabilities got IAY facility in the year 2008-09 in Koraput district. In 2009-10 and 2010-11 there was only one disabled beneficiary under IAY scheme. But this number of beneficiaries increased to 10 in the year 2011-12. While 2012-13 have only six people with disabilities as the beneficiaries of IAY.

Mo Kudia scheme came into existence in the year 2008-09. But there was not a single person with disability who got benefit out of this scheme in the district of Koraput in 2008-09 and 2009-10. Whereas there was one person with disability who received Mo Kudia benefits in 2010-11. The number of disabled beneficiaries remained same in the year 2011-12. The current financial year have four beneficiaries with disabilities who have received Mo Kudia.

## 6. Mayurbhanj

**As per Census 2001, Total Population: 2513895**

**Total no. of PWDs : 54661**

Sl.No	Category	Total No.
1.	Locomotor	13917
2.	Visually Impaired	25199
3.	Speech and Hearing Impaired	10256
4.	Other	5289

### **Transfer of Funds from Directorate to DSWO in the year 2013-14**

Sl.No	Activities	Amount
1	Special School	54,24,873
2	Scholarship	43,87,080
3	Celebration of International Day for PWDs	28,800
	<b>Total</b>	<b>98,40,753</b>

## Details of BBSA Camp from 2011-12 to 2012-13

### 1. Category of PWDs registered:

Sl.No	Category	No. of Beneficiaries
1	Locomotor	16751
2	Speech and Hearing Impairment	3993
3	Visually Impairment	4450
4	Mental Retardation	3077
5	Cerebral Palsy	0
6	Autism	0
7	Multiple Disability	1063
	<b>Total PWDs registered</b>	<b>29334</b>

### 2. Other provisions available at BBSA

Sl.No	Provisions	No. of Beneficiaries
1.	Disability certificate issued	19771
2.	Income certificate issued	13184
3.	No. of landless PWDs identified	271
4.	Bus pass issued	9180
5.	Rail concession issued	3803
6.	Identity Card issued	15649
7.	Pass Book issued	14003
8.	ODP application issued	2155
9.	IAY application issued	907
10.	No. of Banishree application issued	2131
11.	No. of PWDs SHGs form under Mission Kshyamata	60
12.	DRI loan application issued	519
13.	Registered for corrective Surgery	563

### 3. AIDS and APPLIANCES distributed to PWDs

Sl.No	Name of assistive devices	No. of beneficiaries
1.	Tricycle	1815
2.	Wheel Chair	764
3.	Auxiliary Crutches	541
4.	Elbow Crutches	338
5.	Walking Stick	86
6.	Orthosis	129
7.	Prosthesis	59
8.	Hearing aids	2363
9.	Blind stick	1023
10.	Braille slate	175
11.	Rolator	7
	<b>Total</b>	<b>7300</b>

#### 4. Pension beneficiaries

Sl.No	Schemes	No. of beneficiaries
1.	MBPY	13459
2.	IGNDP	3039
	<b>Total</b>	<b>16498</b>

#### 5. Banishree Scholarship distributed during the year 2012-13

Sl.No	Education level	No. of beneficiaries
1	Class I to V	1151
2	Class VI to X	411
3	College	14
	<b>Total</b>	<b>1576</b>

**Total amount of Banishree scholarship distributed Rs. 33, 70,900.00 /-**

#### 6. Details of RDP Rice to PWDs

No. of PWDs availing RDP Rice	No. of PWDs registered online
4482	2245

#### 7. Details of scholarship for children of persons with disabilities pursuing higher studies for the year 2012-13

1.	Total no. of Students provided scholarship	6
2.	Total amount distributed	21,000

#### 8. Details of Special Schools

Sl.No	Name of the Special School	Total no. of Students	Whether registered under PWD Act and JJ Act
1.	Special School for Blind, Laxmiposi	55 (Class I to VIII)	Yes
2.	Special School for Deaf, Laxmiposi	89 (Class I to VIII)	Yes

## 9. Details of DDRC

Date of Establishment	05.01.2003
Building status	Own building located near District Headquarter Hospital Campus, Baripada
Details of Staff	<ol style="list-style-type: none"> <li>1. Senior Orthotist &amp; Prosthetist – 01</li> <li>2. Senior Physiotherapist – 01</li> <li>3. Psychologist – 01</li> <li>4. Mobility Instructor – 01</li> <li>5. P &amp; O Technician – 01</li> <li>6. Clerk – cum – Accountant- cum- Store Keeper – 01</li> <li>7. Peon – 01</li> </ol>
Major Activities	<ul style="list-style-type: none"> <li>• Provision of Special Aids and Appliances</li> <li>• Provision of Therapeutic Services</li> <li>• Issuing Disability Certificate</li> <li>• Counseling- Parents and Individual</li> <li>• Recently CBR programme was undertaken in the block of Shamakhunta and was inaugurated on the auspicious day 2<sup>nd</sup> October, 2013 but due to cyclonic storm Phailin the programme could not be started. After completion of the present ongoing BBSA Camp the programme will be resumed.</li> </ul>

## 10. Block wise distribution of Special Schools

Sl. No	Name of the Special School	Type of disability	No. of Children			Whether getting Grants from WCD
			Male	Female	Total	
1	Jeevan Jyoti Special School Baripada	Mental Retardation and Cerebral Palsy	0	29	29	No
2	ROSE Baripada	Mental Retardation and Cerebral Palsy	62	0	62	No
3	Special School for Deaf and Blind Laxmiposi	Visual Impairment and Speech and Hearing Impairment	126	41	167	Yes

4	Manovikas Special School Betna	Mental Retardation and Cerebral Palsy	0	39	39	No
5	Bharat Jyoti MendhaKhai	Visual Impairment, Hearing Impairment and Mental Retardation	77	111	188	Yes

**Year wise allocation and expenditure under IE programme**

Sl. No	Activities	2007-08	2008-09	2009-10	2010-11	2011-12	2012-13
1	District budget on IE	31.73	32.65	42.72	126.84	149.40	143.33
2	Funds utilized on IE	31.56	32.54	42.70	119.90	98.13	112.09

**Year wise no. of children with disabilities enrolled under IE Programme**

Years	Enrolled
2007-08	7083
2008-09	7315
2009-10	6702
2010-11	6700
2011-12	8451
2012-13	7664
2013-14	3841

**Poverty Alleviation Schemes:**

The following data and statistics we have received from DRDA, Mayurbhanj through RTI application and district website. There is a clear difference in the figures stated by DRDA Officials in their website and the information received through RTI.

**Physical and Financial Achievement under Indira Awas Yojana:**

Year	Total Target	Persons with disability	Budget Allocation	Expenditure
2009-10	10536	0	3644.93	3037.71
2010-11	8136	0	3661.22	3281.43
2011-12	7374	0	3553.01	3214.18
2012-13	8170	0	3985.12	3593.08

**Physical and Financial Achievement under Mo Kudia:**

Year	Total Target	Persons with disability	Budget Allocation	Expenditure
2009-10	673	0	235.55	173.30
2010-11	647	0	291.15	262.67
2011-12	647	0	291.15	263.06
2012-13	937	0	477.01	278.41

**Budgetary Allocation and Expenditure under MGNREGS:***(In Lakhs.)*

Year	Allocation of Funds	Expenditure
2009-10	3194.44	3194.44
2010-11	11933.32	11933.32
2011-12	7033.33	7033.33
2012-13	10755.53	8299.32

**Physical Progress under MGNREGS:**

Year	No. of households issued job cards			
	SCs	STs	Others	Total
2010-11	61056	227973	132179	421208
2011-12	61604	233297	136100	431001
2012-13	61737	236201	137663	435601

**Household's details:**

<b>Year</b>	<b>No. of households</b>		
	<b>Demanded employment</b>	<b>Provided employment</b>	<b>Completed 100 days of employment Total</b>
2010-11	96836	96142	3313
2011-12	70999	70503	691
2012-13	87781	87608	1516

**Budgetary Allocation and Expenditure under SGSY:***(In Lakhs.)*

<b>Year</b>	<b>Allocation of Funds</b>	<b>Expenditure</b>
2009-10	1493.15	1493.15
2010-11	1616.71	1596.62
2011-12	2032.08	1968.62

**Physical Achievement under SGSY:**

<b>Year</b>	<b>Total Beneficiaries</b>	<b>Persons with disabilities</b>
2009-10	10914	206
2010-11	11887	80
2011-12	13469	34

**Scheme wise Physical and Financial Achievement under Poverty Alleviation Programme:  
2012-13**

Sl.	Name of the schemes	Financial (Rs. in Lakh.)							
		OB as on 01.04.2013	Funds Received			Interest	Total Funds	Expenditure	% of Expenditure
			Central	State	Total				
1	SGSY/NRLM	0.00	1200.16	0.00	1200.16	0.00	1200.16	761.61	63
2	IAY (Normal)	338.83	2990.37	994.75	3985.12	32.10	4356.05	3964.01	91
3	IAY (FRA Ben.)	0.00	1145.82	763.86	1909.68	0.00	1909.68	1344.81	70
4	Mo Kudia	28.09	0.00	469.82	469.82	0.00	497.91	306.50	62
5	13 <sup>th</sup> FCA	1283.26	0.00	3109.65	3109.65	0.00	4392.91	2737.53	62
6	BRGF	243.03	2046.00	0.00	2046.00	0.00	2289.03	2083.02	91
7	CC Road	3.40	0.00	1200.64	1200.64	0.00	1204.04	373.50	31
8	SFC Award	1647.36	0.00	3056.82	3056.82	0.00	4704.18	2703.01	57
9	MGNREGS	818.67	7000.00	3658.89	10658.89	59.09	11536.65	10809.07	94

(District Website: [www.mayurbhanj.nic.in](http://www.mayurbhanj.nic.in))

**Physical Achievement in the year 2012-13**

Sl.	Name of the schemes	Physical				
		Target			Achievement	% of achievement
		Spill Over	Fresh	Total		
1	SGSY/NRLM	0	660	660	660	100
2	IAY (Normal)	1641	8170	9811	4417	45
3	IAY (FRA Ben.)	0	5798	5798	77	1
4	Mo Kudia	188	922	1110	340	31
5	13 <sup>th</sup> FCA	72	487	559	413	74
6	BRGF	296	544	840	513	61
7	CC Road	3	133	136	103	76
8	SFC Award	487	332	819	596	73
9	MGNREGS	0	78.47	78.47	58.22	74

(District Website: [www.mayurbhanj.nic.in](http://www.mayurbhanj.nic.in))

**Scheme wise Physical and Financial Achievement under Poverty Alleviation Programme:  
2013-14**

Sl.	Name of the schemes	Financial (Rs. in Lakh.)							
		OB as on 01.04.2013	Funds Received			Interest	Total Funds	Expenditure	% of Expenditure
			Central	State	Total				
1	SGSY/NRLM	438.55	0.00	0.00	0.00	0.00	438.55	26.83	6
2	IAY (Normal)	392.04	3501.00	1050.00	4551.00	0.00	4943.04	218.49	4
3	IAY (FRA Ben.)	564.87	0.00	0.00	0.00	0.00	564.87	292.79	52
4	Mo Kudia	198.68	0.00	0.00	0.00	0.00	198.68	97.07	49
5	13 <sup>th</sup> FCA	1626.15	0.00	507.97	507.97	0.00	2134.12	1508.16	71
6	BRGF	206.01	0.00	0.00	0.00	0.00	206.01	40.99	20
7	CC Road	830.54	0.00	1528.98	1528.98	0.00	2359.52	1170.46	50
8	SFC Award	2001.17	0	1686.6	1686.60	0.00	3687.77	1600.75	43
9	MGNREGS	720.86	4000.00	5388.04	9388.04	0	10108.9	7009.71	69

(District Website: [www.mayurbhanj.nic.in](http://www.mayurbhanj.nic.in))

**Physical Achievement in the year 2013-14**

Sl.	Name of the schemes	Physical				
		Target			Achievement	% of achievement
		Spill Over	Fresh	Total		
1	SGSY/NRLM	0	0	0	0	0
2	IAY (Normal)	5394	12000	17394	79	0
3	IAY (FRA Ben.)	5721	0	5721	84	1
4	Mo Kudia	785	625	1410	190	13
5	13 <sup>th</sup> FCA	146	453	599	521	87
6	BRGF	327	0	327	78	24
7	CC Road	36	1077	1113	553	50
8	SFC Award	223	374	597	276	46
9	MGNREGS	0	69.52	69.52	37.31	54

(District Website: [www.mayurbhanj.nic.in](http://www.mayurbhanj.nic.in))

## 7. PURI

### Transfer of Funds from Directorate to DSWO in the year 2013-14

Sl.No	Activities	Amount
1	Special School	68,71,855
2	Scholarship	47,27,000
3	Celebration of International Day for PWDs	25,000
	<b>Total</b>	<b>1,16,23,855</b>

### BBSA Camp Details

#### List of Persons with disabilities registered:

Category of PwDs						
Locomotor	Speech and Hearing	Visual Impairment	Mental retardation	Cerebral Palsy	Autism	Multiple Disability
4446	2370	1222	1081	193	1	133

#### Beneficiaries in each of the activities (22 sibirs):

Sl.No	Activities	No. of Beneficiaries
1	No. of cases registered	9446
2	Disability certificate issued	3653
3	Income cert. issued	0
4	Residence cert. issued	0
5	Bus pass	26
6	Rail pass	0
7	Identity Card issued	88

8	Pass book issued	0
9	ODP application issued	88
10	IAY application received	0
11	DRI Loan Appl. Recd.	83
12	Registered for surgery	0

### **CWSN identified and enrolled in District**

<b>Year</b>	<b>CWSN Identified</b>	<b>CWSN Enrolled</b>
2008--09	3427	3427
2009-10	3560	3511
2010-11	4228	4149
2011-12	4980	4895

### **Year wise allocation and expenditure under IE programme**

<b>Sl. No</b>	<b>Activities</b>	<b>2007-08</b>	<b>2008-09</b>	<b>2009-10</b>	<b>2010-11</b>	<b>2011-12</b>	<b>2012-13</b>
1	District budget on IE	31.73	32.65	42.72	126.84	149.40	143.33
2	Funds utilized on IE	31.56	32.54	42.70	119.90	98.13	112.09

**Year wise and Scheme wise Physical and Financial Achievement under Poverty Alleviation Programme:**

S l.	Name of the schemes	2009-10			2010-11			2011-12			2012-13		
		Total Funds	Expenditure	% of Exp	Total Funds	Expenditure	% of Exp	Total Funds	Expenditure	% of Exp	Total Funds	Expenditure	% of Exp
1	SGSY/NRLM	656.45	646.45	98.54	579.84	557.69	96	950.90	876.76	92	394.83	320.69	81
2	IAY (Normal)	5275.66	4420.45	83.79	4284.57	3764.50	88	3520.65	2993.25	85	4309.95	3689.32	86
3	Mo Kudia	619.24	152.90	24.69	728.24	440.50	60	549.55	358.65	65	502.75	392.10	78
4	GGY	1666.47	820.75	49.25	2345.72	1796.50	77	2049.22	1435.50	70	2113.72	1529.50	72
5	MGNREGS	662.17	557.13	84.14	3307.04	2892.28	87	3128.89	1730.55	55	2403.09	2150.05	89
6	SFC Award	67.98	67.98	100	333.53	0.00	0	604.45	265.15	44	2584.55	2376.96	92
7	12 <sup>th</sup> /13 <sup>th</sup> FCA	1064.58	1064.58	100	893.28	543.32	61	1658.03	491.99	30	2697.54	2398.24	89
8	CC Road				262.74	51.03	19	562.03	400.52	71	721.46	394.14	55

**Physical Achievement**

S l.	Name of the schemes	2009-10		2010-11		2011-12		2012-13	
		Total Target	Achievement	Total Target	Achievement	Total Target	Achievement	Total Target	Achievement
1	SGSY/NRLM	4720	4193	5400	4070	4587	5364		
2	IAY (Normal)	15849	8527	14665	7808	14030	6413	15833	8010
3	Mo Kudia	1769	205	2146	1105	1623	709	1615	1065
4	GGY	1418	777	1523	1128	1400	1137	1708	1168
5	MGNREGS	839	18	2196	755	2708	520	4130	803
6	SFC Award	25	25			178	99	670	589
7	12 <sup>th</sup> /13 <sup>th</sup> FCA	164	164	264	184	310	132	318	280
8	CC Road			481	18	463	259	414	274

## 8. Cuttack

### Transfer of Funds from Directorate to DSWO in the year 2013-14

Sl.No	Activities	Amount
1	Special School	79,24,015
2	Scholarship	83,46,670
3	Celebration of International Day for PWDs	25,000
4	Care and Protection	15,000
5	Marriage Incentive	2,00,000
	<b>Total</b>	<b>1,65,10,685</b>

### BBSA Camp Details

#### List of Persons with disabilities registered:

Category of PwDs						
Locomotor	Speech and Hearing	Visual Impairment	Mental retardation	Cerebral Palsy	Autism	Multiple Disability
10317	5568	4883	7519	0	0	0

#### Beneficiaries in each of the activities (30sibirs):

Sl.No	Activities	No. of Beneficiaries
1	No. of cases registered	28287
2	Disability certificate issued	13212
3	Income cert. issued	3852
4	Residence cert. issued	0
5	Bus pass	5144

6	Rail pass	0
7	Identity Card issued	6553
8	Pass book issued	1665
9	ODP application issued	2877
10	IAY application received	0
11	DRI Loan Appl. Recd.	1354
12	Registered for surgery	492

**Total number of children with disabilities in the district:**

Year	Number of CWSN	Out of School
2008-09	4013	531
2009-10	5746	299
2010-11	5333	250
2011-12	6567	186
2012-13	5880	Nil
2013-14	4903	Nil

**Budget Allocation and Expenditure on Inclusive Education:**

Sl.No	Activities	2007-08	2008-09	2009-10	2010-11	2011-12	2012-13
1	District budget on IE	46.46	47.47	68.252	159.99	197.01	170.52
2	Funds utilized on IE	37.71	47.06	68.97	152.34	169.12	164.64

### Activities under Inclusive Education

Sl. No	Activities	2007-08	2008-09	2009-2010	2010-11	2011-12	2012-13
1	No. of Aids and Appliances distributed to CWSN	448	379	445	284	213	789
2	No. of CWSN provided cleft palate/cleft lip operation	0	48	31	32	25	48
3	No. of CWSN provided polio surgery	0	26	10	0	48	14
4	No. of CWSN provided eye surgery	5	2	3	3	3	10
5	No. of Speech Therapy camp conducted	25	40	25	30	40	40
6	No. of Physiotherapy Camp conducted	0	0	0	0	0	0
7	No. of Parents training programme conducted	2000	1600	2500	2000	2500	5000
8	No. of Teacher trained on IE (3-5 Days)	1000	720	7200	2000	0	200
9	No. of Teacher trained on FCED course (90 days)	80	40	40	80	40	40
10	No. of Theme based camp conducted	40	70	90	60	90	90
11	No of Sports meet conducted	0	15	15	0	0	15
12	No. of International day for the people with disabilities	15	15	15	16	16	16
13	No. of Medical camp conducted	15	15	15	18	15	16
14	No. of Ramps with handrail constructed	308	392	400	255	75	0
15	No. of disabled friendly toilet constructed	0	0	0	50	70	0
16	No. of Braille books provided to students with visual impairment	0	15	15	22	26	37
17	No. of CWSN identified	5235	5562	5333	5674	5657	6550
18	No. of CWSN enrolled in Regular School	4978	5366	5087	5333	6470	6550
19	No. of CWSN enrolled in EGS /AIE	165	0	0	0	0	0
20	No. of CWSN covered through HBE	196	124	120	115	92	350

**Poverty Alleviation Schemes:**

**Financial Achievement under IAY**

<b>Year</b>	<b>Allocation</b>	<b>Expenditure</b>
2009-10	4054.01	3734.71
2010-11	4289.83	4029.50
2011-12	4057.34	4765.73
2012-13	5178.10	6700.89

**Financial Achievement under Mo Kudia**

<b>Year</b>	<b>Allocation</b>	<b>Expenditure</b>
2009-10	276.15	211.55
2010-11	340.20	373.65
2011-12	340.20	596.61
2012-13	484.20	548.22

**Financial Achievement under NREGS**

<b>Year</b>	<b>Allocation</b>	<b>Expenditure</b>
2009-10	1705.01	2415.74
2010-11	7122.21	5189.07
2011-12	2944.45	3184.71
2012-13	1388.89	1980.78

**Financial Achievement under SGSY**

<b>Year</b>	<b>Allocation</b>	<b>Expenditure</b>
2009-10	575.04	731.06
2010-11	585.62	608.26
2011-12	668.77	570.44

**Physical Achievements**

<b>Year</b>	<b>Total Beneficiaries</b>	<b>Disabled Beneficiaries</b>
2009-10	148781	3
2010-11	219766	53
2011-12	221093	
2012-13	231000	74

*(This includes total beneficiaries and disabled beneficiaries of schemes like SGSY, IAY, Mo Kudia and NREGS)*

## **Chapter: 8**

### **CONCLUSION**

It is established, based on the interviews with government officials at the State level, analysis and review of the documents, reports, policies and guidelines, financial documents of the various departments that disability remains an issue of lesser priority in government of Odisha. The feature that strikes immediately is the complete absence of the mandate of UNCRPD in the planning process and budget allocation in the state. There is no effort towards making reasonable accommodation towards inclusion of persons with disabilities. It has been 7 years since the ratification of the UNCRPD but there is no evidence of progress by the Government to bring in new policies and programmes to implement the various provisions of the convention or to bring in changes in the existing policies, legislations and funding patterns. In fact, the state is yet to have a disability policy highlighting government's vision, commitment and way forward for development and progress of the population with disability. No disaggregated data could be found on disability.

In individual sectors the situation was equally bleak. In inclusive education a major portion of budget is spent on corrective surgeries etc. As far as health is concerned there is no effort that focuses on the sexual and reproductive health care needs of women with disabilities, no special focus on nutrition of infants with disabilities or any provision of taking health measure to prevent secondary disabilities. All the employment scheme focus on training in skill and self-employment in an segregated and no proactive measures have been taken to include the training of persons with disabilities in the existing setup. There is also no provision for ensuring non-handicapping environment in places where persons with disabilities are employed. Relevance of disability in the poverty context is still not understood well by the Panchayati Raj department which designs and implements these programs. Leisure, recreation, sports, political participation etc. are areas where government had no thoughts on disability.

Moreover, though the Government provides some facilities and services, the experience of accessing these services are very disabling because often they are not flexible to meet individual needs. And disability seems still to remain a "NGO business" – not a main stream business. There is the tendency of government to outsource disability issues to NGOs and DPOs.

## **Recommendations**

- Government should have a UNCRPD guided disability policy in place.
- The Government should amend the policies, guidelines and schemes so that they are responsive to the needs of persons with disabilities ensuring accommodations and monitoring mechanisms.
- Government should invest in awareness programs to make persons with disability aware of the provisions and facilities available for them. It must create a quality assessment and service delivery system that is centered on disabled people, ensures their participation in assessment and service delivery has invisible borders and is easy to access.
- Effective consultation with persons with disabilities and their representative organizations as well as other key stakeholders should take place at the outset when development programs are being designed and implementation plans drawn up, so that relevant issues are appropriately taken into account. This should happen at all tiers including the Panchayat.
- Government should promote social protection floors and social protection systems that include persons with disabilities on an equal basis with others, take their specific requirements into account in defining benefits including schemes or programs that guarantee income security, social health protection and other mechanisms to ensure universal health coverage, as well as schemes and programs that facilitate their participation in employment.
- There should be a mandate to present disability disaggregated data.
- The State Government shall bring a CRPD compliant Budget Statement.
- As an immediate effect to bring in changes in the legislations that are discriminatory e.g. Banking Regulations, Post Office Rules that have direct impact in accessing the various poverty alleviation schemes of the government.
- Government should improve the quality of relevant disability information collected, analyzed and used, including regular national surveys of activity limitation.